



LAPIS

www.ndlapidary.org.au

“SHARE YOUR KNOWLEDGE”

VOLUME FORTY SEVEN - NUMBER SEVEN

APRIL 2011

CLUB NEWS

The next General meeting will be on **Tuesday 12th April at 8pm**. All members welcome.

Guest speaker

Guest speaker for April is **Keith Taylor**, who will speak on Sapphire prospecting. He will describe the simple tools needed, the effort you need to apply and about his favourite prospecting area, Guyra. He will also display some specimens from his own collecting.

FROM THE PRESIDENT

Easter brings an annual reminder that life has new beginnings. The people of Christchurch NZ, Japan and Burma have suffered great upheaval which we cannot even imagine possible. Our thoughts are with them as their loss is mourned and threads gathered to renew their life.

It is hard to say “Happy Easter” amid such turmoil.

GEMBOREE at Bathurst is the major event this month. Ed has organized a coach. Take advantage of it. It will be cancelled if more people don't use it and there will be disappointed “would be” travelers.

A “Beetles Night” is planned for Saturday night May 28th. This will be a Social night of fun for all the family, young and old. Look for further information in Lapis.

My project is “get to know our members” To this end I have invited Life Members – those who laid down the building blocks of our club – to tell their story. Life Member Jean Macleay has responded with the same enthusiasm that has propelled her to educate herself and “Share the Knowledge” with others while raising 4 children and living some distance from the Club rooms. I salute you Jean for your contribution to make this club successful. Members are privileged to receive the fruits borne from your labour and enthusiasm.

Jean's story is truly an inspiration to our newer members who will emulate the quality of leadership for the benefit of members into the future.

Diane Neasmith.

Jean Macleay's article is appended to the back of Lapis, only because of my inability to insert it in Lapis in same format as the rest of the magazine. It leaves me wanting to hear the rest of the story. Thanks Jean .
Ed.

New Members

We would like to welcome our newest members

Jon Beuman of Mount Colah

Keith & Jean Jamieson of Galston

Mark Sheldon of Galston

Travis Thorn of Elvina Bay

Isabelle Orr of Beecroft

We wish them much enjoyment cutting gemstones and enjoying the other aspects of our Club.

GEMBOREE 2011 BUS

*** **Please Note change of Date *****

A bus is being organised to leave Beecroft (opposite fire station), Wongala Road to the Gemboree on **Saturday 23rd April**, giving you about 4 hours to free range about the showground.

Leaving Beecroft at 8:30 am and returning by 5:00 pm. Bring nibbles.

There is a toilet on the bus.

Cost is \$42 per person. Payment required when booking seat. Gemboree tickets to be purchased on arrival.

Nivea Adami has volunteered to be Bus Captain. Payment can be made by cheque to The Secretary, NDLC, PO Box 59, Beecroft NSW 2119 or contact Ed by e-mail, etzed@optusnet.com.au for details about making a Direct Debit and Registration Forms (Word format)

NB *To ensure the bus is full, it is anticipated that offers will be made to other local clubs so that NDLC will not bear costs for empty seats. Please make your decisions and bookings early to avoid disappointment.* Editor

GO WEST GREY NOMADS!

AN EXTENDED FIELD TRIP.

After the Bathurst GEMBOREE at Easter we are organising a trip to the Macquarie Marshes where we will stay at Willie Retreat Caravan Park. This area is renowned particularly for its birds and other wild life, especially after the rains. Afterwards we will go on to White Cliffs to find our fortunes in opal. This trip should take approximately two weeks, so if you are interested please put your name on the list in the cutting room or ring me for further information.

Bert Deane 9653 1849.

Auditor Required

An Auditor is required for the NDLC Accounts. If you have suitable skills and qualifications and the time for this voluntary position, please contact club President Diane Neasmith or Treasurer Sharon Waters (see Club Directory)

Report on Seniors Week

On 2nd March NDLC Hosted an Open Day for seniors promoted and supported by Hornsby Council, as part of Senior's Week. NDLC was showing off the arts of lapidary and associated crafts. Many thanks to Mr Harry Lovell and Mr Norm Fitzpatrick for providing showcases of work highlighting quality and diversity of Lapidary work.

GEMBOREE 2011 COMPETITION

The 2011 GEMBOREE, to be held at Bathurst, over the Easter period, is fast approaching.

There are many aspects of a GEMBOREE, and the responsibilities for these have been shared among a number of clubs. The Northern Districts Lapidary club and the Central Coast Lapidary Club have combined to take on the responsibility

of organising the competition portion of the GEMBOREE. A small committee formed from members of both clubs commenced working on this project over four years ago – drafting the competition schedule and ensuring that there was a good and interesting cross section of areas in which people could compete.

The judging of all entries received to date – there is a total of 1278 entries entered in the competition – has now been completed. This was carried out over a four day period – two days and 75 people in the facilities of the Parramatta Holroyd Lapidary Club and another two days and 70 people in the clubrooms of the Central Coast Lapidary Club.

This has been a mammoth job involving the services of many people in a variety of roles such as judging; pencilling; being a scrutineer; runners and those people in the kitchens that kept the troops fed and watered in an excellent manner.

NDLC members have supported these activities in a great way, and I believe many of the newer members that took part in them learned a lot, which will stand them in good stead as they learn and enjoy the various skills being taught by our club.

I sincerely wish to thank all of our members that gave of their time to assist in making this part of the GEMBOREE a success. It has been a great team effort, and I look forward to seeing as many of you as possible at Bathurst, so that you can see the outcomes of your efforts, and enjoy the camaraderie of others with “rocks in their heads” from other clubs.

Thank you.

Barbara Try

The Somerville Collection

One local attraction not to be missed in Bathurst is the Australian Fossil & Mineral Museum that houses the famous Warren Somerville collection. See one of our nation's most magnificent collections which has been assembled over more than 50 years from Australia and overseas.

The Collection at the moment comprises about 5,500 specimens. The Tyrannosaurus rex, the Albertosaurus and the Thescelosaurus (a kangaroo sized herbivore), the dinosaur eggs, as well as the

foreign and Australian minerals and the collection of crystals of gem minerals such as rubies, sapphires, topaz, tourmaline, aquamarines, garnets, amethyst along with the crystals of uranium minerals. **It's really impressive!**

(description by John Chapman from the Mineralogical Society)

Field Trips Report.

Field Trip Report: Blue Mountains National Park, Mt Werong, Ruby Creek Mine, Porters Retreat, Sapphire Bend and Blue Hill Quarry.

Date: 4th to 6th March 2011

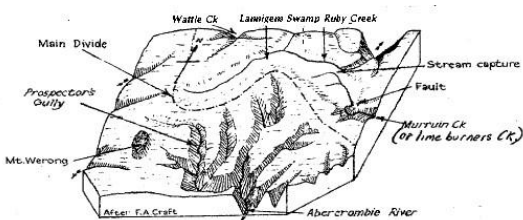
Trip started Friday afternoon heading along the



M4, my wife Tereska had been invited to a bridal shower so the

trip was to be a solo. At Katoomba, I dropped into the Police Station. Registering the Blue Mountains part of the expedition as it was going into a "Wilderness Area" and picked up a PLB (a Personal Locating Beacon also known as an EPIRB for you boaties). This is a device given freely to those who do adventure activities in the Blue Mountains. Its sole purpose is to call emergency services if the need arises by satellite communication. Back on the road, past Mt. Victoria, Hartley, Lowthar and then just all road, eventually was driving onto Shooters Hill Road and finally the Mount Werong Road.

Got to the Mount Werong Camping Ground, looked at the ground, looked at the hut and decided to set up camp in the Hut. The Hut is a fairly large stone and ash/cement structure with a large main room, internal and external kitchen, three bedrooms and a hexagonal single outdoor building. Made dinner in the twilight and enjoyed the sunset. On setting up accommodation for the night, I discovered I had left my sleeping bag at home. Luckily, I am a bushie and know about layering, so on went the extra layer of trousers and shirt, used my sheepskin coat as a blanket and dries-a-bone as foot warmers. My blow up camping



MT WERONG PLATEAU

roll was perfect and had a very comfortable sleep. Morning saw the arrival of two members, they set up their trailer and by 10:00am we looked as if the party was complete. There is no mobile communication in the area. From the camping grounds we headed north to reach Ruby Creek and then followed it easterly through thinned out paperbarks, snowy barks and red gums. There was a profusion of birdlife observed along the walk. The last kilometre was along a fire trail through bracken fern, ground palms, blackbutts and stringy barks. Pitcher plants and Venus fly traps were very colourful. Along much of the walk we noted large tree stumps some up to 3 meters in diameter, cut a meter or two above the ground, some even had axe scars that the loggers rigged up to place planks so they could cut the tree.

First sight of the mine site was the old galvanised shed that had been knocked down, only three walls remaining. A bit further down the hill was the processing area, a fifty meter square block in two terraces. The top terrace had a shaft filled in but its shaft head timbers had been left standing. Scrambling down to the lower terrace, a run-off retention dam had been built here, about a meter



high, made of basalt blocks with veins of very fine crystal mass of dark green corundum.



Two mines were down in the gully so we started our climb downwards. The slope in places was steep, the gradient ranging from 1:3 to 1:1, more 1:1, a few spots were bum slides down chimneys in the rock. At the bottom we crossed Ruby Creek and then 20 steps onward, looked down a shaft some 50 feet down (the units pioneers used) or about 16 meters. The bottom was water filled and the timber supports in places had collapsed. There was another shaft with a hut on top, the shaft head had a grate across it. Not much interesting rock here. No evidence existed of a railway used to

moved rocks mined to the processing plant. The corundum was taken to Mittagong, Iron Oxide added to make various grades of emery paper. The ore extracted consisted of quartz feldspar porphyry and quartz carrying galena, zinc blend and pyrites, with a little chalcopyrite in some parts. Moving down stream, a fault line was observed across the creek, this dyke was the original indicator of corundum in the area. One specimen the size of a large Easter egg had pyrites and metallic beads incrusting in it. Working upstream, a vein of dense mudstone was found that had large metallic crystals sparkling in the sun. Just above this site was a cliff face of columnar basalt about 7 meters wide and 20 meters high.

Finishing lunch, we back tracked to the top of the plateau and took a walk along another fire trail and then went bush bashing trying to find another mine called Grimshaw & Orans Workings. Didn't find the workings but the tree stumps were 3 meters across, showing the rich resources that the pioneer lumberers had extracted from the area. On the return back, Keith discovered a water race in the reeds of Ruby Creek used for cleaning gold. It was a straight cut, water flowing through it and a meter deep at the exit.

While back at Werong Hut, a stranger introduced himself as George Freeman, he had built the Mt Werong Hut and lived in it for 14 years. He and his wife had built it over a summer weekend back in the 60's using local materials, ash and cement. He explained how he made a trough, mix ash and cement and then cut the dried blocks to lengths he needed. He showed us photos of his time at the hut. He stayed overnight and went off to visit some friends still on the land nearby.

Towards evening, a cyclist arrives. He had started at Blackheath and was cycling to Yerranderie. When I got up at sun rise next morning, he had already left.

Sunday saw us travel to Porters Retreat, we parked the car at the junction and then took the track through the Mining Reserve to get to a shady spot along Retreat River. The area had been extensively dug up by fossickers. The real attraction was the ripe blackberries.

Next stop was Sapphire Bend, we drove into the forest, I stopped at a long water filled mud hole in the pine forest track but Keith drove on in his 4WD to get to the fossicking area. The area we set up had been well fossicked. We selected existing meter diameter holes and excavated the sides. We moved the equivalent of 8 litres of gravel, there

was some colour, I found one clear quartz crystal 1mm Diam x 4mm long, plus a 3/4 eight sided garnet. One of the stones picked turned out to be spinel. After lunch, we moved on trying to find a quarry on Mozart Road, but the new forest area hid it well, pity I didn't have my navigator. Last stop was Blue Hill Quarry, the southern side displayed the three quartz veins along the quarry sides for 30 meters. There was plenty of evidence that nearly the entire length has been worked to find the elusive large smoky quartz crystals this quarry is famous for producing.

The return trip home included a stop at Katoomba Police Station to return the PLB. When I got home and opened the garage doors, the sleeping bag was on the floor. Now I know if I want to go light weight overnight bushwalking, I don't need my sleeping bag.

Use of Library

Our Librarian, Marijke Noonan, has updated processes for library loans, just some minor changes. The loans processes and borrowing times will be posted with the loans books and on the cabinet front.

Casual Cutting

Casual cutting will be available on the first Friday of each month, limited to club members only. No teacher will be available, but the principle of 'share the knowledge' will, I'm sure, apply. Casual cutting rates will apply

Safety Thoughts restated

The time to think of safety is before you start the job

If you don't know how it works, ask first.

Do you know all you need to know to do the job?

If not, ask or research.

There is no such thing as a stupid question when it comes to safety.

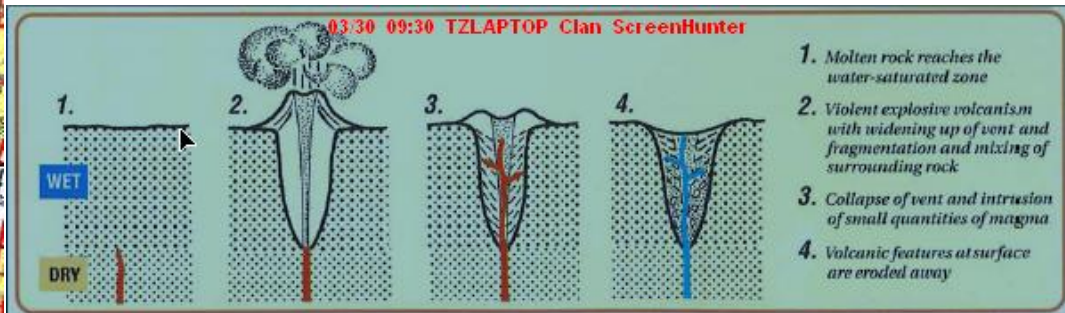
Ask for safety's sake- ---And Yours

If you see someone doing the wrong thing in the club, please prompt them gently to a safer behavior or action. Use an educative approach.

If prompted, please accept it as an action directed to your welfare.

Field Trip Report Thursday 18th March
 Hornsby Bushwalk to Hornsby Quarry.
 Pre European Aboriginal people of the Dharug, Kuringai and

deep. The base of the quarry floor was filled with water. Some 50m deep, 10m had already been drained and the rest was to be pumped out over the next year or two. The pipe



Darkungung language groups lived in the Hornsby area.

1820s The Area was settled by Higgins family, who were the first Europeans to permanently live in the Hornsby area. Thomas Edward Higgins was granted 250 acres by Governor Brisbane in 1823 with the land grant formally recorded in 1836.



The day started early with a threat of rain, by the time we got to Quarry Road, the four of

only road in the shire without a time limit. The

pumping the water had a head of 80m and when finished will be 130m and pumping 50 litres/second. No one can enter the quarry proper as the geologist have rated the quarry walls as highly likely to collapse. Pumping the water out will lower the water table and make the walls more stable as the muddy breccia becomes dry.

We continued to circumnavigate the quarry rim, seeing layers of tuff, blocks of basalt and a conglomerate of breccia mix. Half way around, you could see the anticline of the collapsed diatreme bowing downwards across the north east face of the quarry. We got around to the old remnant workshop with the oil tanks as the only remaining structure. A shedded snakeskin lay in a concrete pool. A rat scurried into the nearby reeds. We gathered a few rocks and then returned to finish by 3:00pm.

Whirlpool Crossing



First Impressions



The Collapsed Diatreme



us headed along the Blue Gum Track that went down into Old Man Valley along old sandstone steps constructed during the depression. Then up over a ridgeline along a fire trail to the Washpool. We moved down a track for about 120m and had morning tea. See the top row of photos. Old Man Creek was very still and the local aspects mirrored in the clear mirrored pools. →.

The track now was single file as we headed along Old Man Creed, crossing the Whirlpool crossing and then progressing up the ridge line, one section we climbed up 8m in a steep chimney. The track then levelled out into the plateau track. One section had us crossing a saddle and the last kilometre had us walking through thick palm undergrowth. We all gave the local leaches a good feed, constantly flicking them off until we returned to the cars and had lunch.

2:00pm had Max from council arrive and allowed us to park behind the gate leading into the quarry. We met the security guard at the historic cemetery of the Higgins clan. They had nabbed three trespassers in the past week and they will be appearing before the local courts soon. The quarry was jaw dropping when first seen. It was vast and



Rock engraving



CLEANING A STONE

Often, when judging cabochons and freeform entries in competitions 'Foreign Surface Material' is found on the stone. It is usually a bit of dopping wax or shellac, sometimes cerium or other polish, occasionally textra pen marks. Depending on the amount of material and also the judge this can result in up to a one point penalty. None of us can afford to throw points away like that.

Even if it is not a competition entry we still want our finished stones to be clean and sparkling.

Usually a good look at the stone for any rubbish, then a wipe with a plain tissue soaked in metho, followed by a rinse in warm water and detergent then plain warm water will do the job. When drying the stone take care not to use a 'smelly' tissue, the type infused with gum trees or other organic material. They are oily and will leave a very streaky stone.

Other options are to use the solution used for cleaning your glasses, or dunk the stone in a nip (or two) of vodka. The alcohol evaporates off the stone and then you can drink the vodka.

Very occasionally you may find a thin streak of cerium around the edge of the stone that defies all attempts at removal. Or it may be a wavy water mark (similar to the high tide mark when you have a bath and forget to clean up). The only method that I have found successful is to 'polish' the residue away by using the canvas buff with lots of water (no polish).

Jw

Patterns in Agates

Agates will be available in bulk from the dealers and tailgaters at the GEMBOREE as well as forming part of competition entries. They are relatively cheap and infinitely variable.

Agate is a fine-grained, fibrous variety of chalcedony with colour banding or irregular clouding. Patterns and colours in agate may be subtle or quite flamboyant, with a wide variety of manifestations of pattern, colour or phenomena characterising agates from specific places or even sub-areas of agate fields.

Below are photographs showing patterning types and a variety of phenomena to be found in agate. The list is not exhaustive. Many combinations may even occur within one stone.



Fortification Agate, pattern is relatively Concentric like the plans of old forts



Onyx banding in agate, pattern is horizontal and parallel, alternating colours



Vein agate (Fills cracks and fissures in rock, instead of filling vughs –gas holes)



Lace or crazy lace agate, irregular patterning, Many types of patterning



Tube agate. Tubes form like stalagmites. Note that the spaces between tubes may be completely filled by agate or other materials.

Fine banding acts as diffraction grating, showing spectral colours



Eye Agate, may be due to cross-cut of Tube agate or mammillary (rounded form) Fortification agate

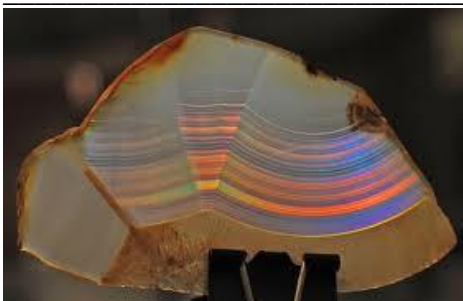
Dendritic Agate cabochon (dendrites are 2 dimensional - flat plane – inclusions) Usually forming in faults in agate



Polyhedroid agate, strongly angular with flat faces , probably pseudomorphs



Plume agate (Plumes are 3 dimensional, dendritic like structures in agates)



Iris Agate, Light source in different positions. Must be seen with single point illumination.

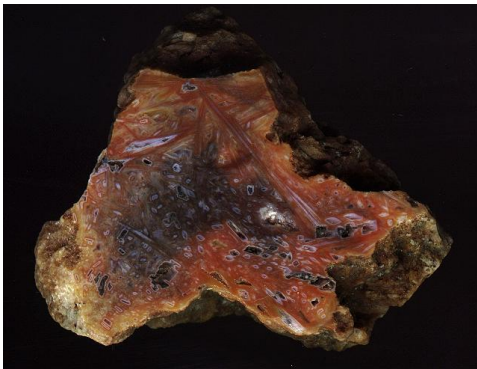




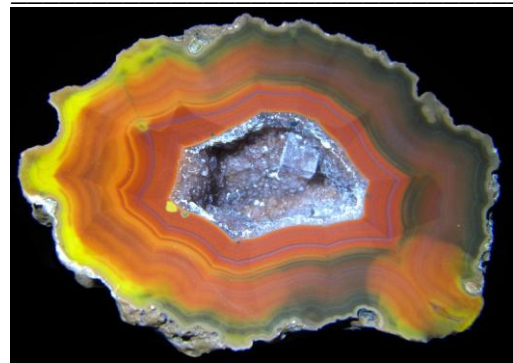
Moss agate slice and cabochon. It is Chalcedony with inclusions of chlorite or Hornblende.



Shadow effect in agate (dark curved line to Right). A light effect caused by light entering transparent bands between opaque bands in agate. Shifts as agate is moved.



Agate pseudomorph, replacing aragonite xls



Polychrome effect. Colour variation within Agate banding
(All images sourced from the internet—Ed)



Agate pseudomorphs, replacing corals. Petrified woods are probably the most common pseudomorphs.

Cooks' Corner

Chimichirri is an Argentinian sauce served with barbeque meat that is cooked in the simplest manner, just salted then placed on the grill to cook slowly. This is too good for the Argentinians to keep to themselves.

Chimichurri Recipe

INGREDIENTS

- 1 cup firmly packed fresh flat-leaf parsley, trimmed of thick stems
- 3-4 garlic cloves
- 2 Tbsps fresh oregano leaves (can sub 2 teaspoons dried oregano)
- 1/2 cup olive oil
- 2 Tbsp red or white wine vinegar
- 1 teaspoon sea salt
- 1/4 teaspoon freshly ground black pepper
- 1/4 teaspoon red pepper flakes



Sagenitic agate. Radiating masses of xls Enclosed within chalcedony or agate.

METHOD

1 Finely chop the parsley, fresh oregano, and garlic (or process in a food processor several pulses). Place in a small bowl.

2 Stir in the olive oil, vinegar, salt, pepper, and red pepper flakes. Adjust seasonings.

Serve immediately or refrigerate. If chilled, return to room temperature before serving. Can keep for a day or two.

Serves 4.

DIRECTORY

President Diane Neasmith 98692314
Mob. 0468973320 dneasmith@ozemail.com.au

Vice President vacant

Secretary Glenn Brown 9617 0446
glenn.brown@csiro.au

secretary@ndlapidary.org.au

Treasurer Sharon Waters 98718938
sgwaters@tpg.com.au

Minutes Secretary Gibson Owen 94114767
Mob. 0418227127 gibson@lawfully.com.au

Editor of Lapis Colin Hazell 0410 659 729
col.hazell@Bigpond.com.au

Cutting Room Supervisor Phil Manton 91445869
Mob. 0431184110

Education Officer vacant

Field Trips Officer Edward Zbik 96386586
mob.0410538480 etzed@optusnet.com.au

Librarian Marijke Noonan 94491107
Mob. 0410443777 noonandm@bigpond.net.au

Social Secretary Vacant

Publicity Officer vacant

Gem Council Delegate Barbara Try 4393 6168
twotrys@bigpond.net.au

Committee Member Tony Try 4393 6168
twotrys@bigpond.net.au

Web Master Alex Maitland
maitland1@gmail.com

Club Telephone Number 9484 0014

Public Officer Brian Burns 9878 4073

Postal Address Secretary
Northern Districts Lapidary Club
PO Box 59
Beecroft NSW 2119

Northern Districts Lapidary Club acknowledges the support of Hornsby Council.

~NORTHERN DISTRICTS LAPIDARY CLUB INC. holds the majority of its monthly meetings in the Beecroft Community Centre, Beecroft Road, Beecroft at 8pm on the 2nd Tuesday of each month except January. Variation in date and time of meetings are published in Lapis, and on the club website.

The Entrance to the clubrooms is on the railway side of the building. ~

Membership Fees: effective from 01/07/2010
Entrance/ Annual Subs

Full Member aged 18 or more yrs	\$25	\$20
Junior member aged 10 to 17 yrs incl.	\$10	\$10
Family Concession	\$40	As Above
Junior Associate member aged less than 10 yrs		No charge

In case of a person being admitted to membership on or after January 1st in any Club financial year, the subscription fee that year shall be half the amount.

**THE CLUB FINANCIAL YEAR IS FROM
JULY 1ST – JUNE 30TH**

WEBMASTER – Alex Maitland
Mail to: ammaitland@optusnet.com.au

CURRENT CLASSES & ACTIVITIES HELD IN CLUB ROOMS

Monday 7.30pm CABOCHON CUTTING
Instructors Glenn Brown 9617 0446
7.30pm SILVER JEWELLERY
Instructor Johan ten Hoedt 9484 6521

Tuesday 9.00am SILVER JEWELLERY workshop
Contact Ed Bentley 94985748

Wednesday 10.00am SENIORS ALL DAY Workshop
Contact George Hunter 9871 2126
7.30pm SILVER JEWELLERY
Instructor Brian Burns 9878 4073

Thursday 7.30pm CABOCHON CUTTING
Instructor John Weatherburn 9871 3302
7.30pm FACETING CLASS
Instructor Norm Fitzpatrick 9876 1815

Friday CASUAL COMPETITION CUTTING
No teacher – self help - enquiries please
contact John Weatherburn – 9871 3302

Saturday 1.00pm Family CLASS
Instructor Paul Khoo
with Corin Sadlier 9869 7775

CLASS FEES can be paid to your class teacher, also
annual membership fees when due and any purchases
from the shop.

**CLASS, CASUAL & WORKSHOPS FEES –
EFFECTIVE FROM 01/01/09**

First Class – per term (School Term)	\$30
Any Additional Class – per term (School Term)	\$25
Casual Use of Machinery – per attendance	\$5
Workshops – 2 day weekend	\$25
1 day (plus materials)	\$15

Workshop Weekends: Subject, Date, and requirements
will be printed in this newsletter as they occur.

There are waiting lists for some classes

DATES OF INTEREST

2011 – GEMBOREE – NSW –

Bathurst Showground April 22-25
May 14, *Lismore Gemfest, Lismore showground*
May 28, Nepean Club; Jewellery Gemcraft sale
& open day 12 North St, Penrith
June 5, Canberra Club; Winter Gem Show
Parkes Roo, Exhibition Park in Canberra
June 18-19; *Windsor Jewellery Beading Gem &
Mineral show, Windsor Function Centre, cnr
Dight & Macquarie Sts, Windsor*
Aug 11-14, Gemfest, Anakie, Qld
Aug 20-21, *Blaxland Club, Annual Gem Show,
Glenbrook Comm.Hall, Gt West. H'way,
Glenbrook*
Aug 27-28, Carlingford Jewellery Beading Gem
& Mineral show, Roselea Community Centre,
Pennant Hills Rd, Carlingford
Oct 1-3, *GEMKHANA, Cessnock Showground*
Oct 14-16, Central Coast Club ; Annual Festival,
Mingara Club, Tumbi Umbi
Oct 5-6, *Illawarra Club; Annual Exhibition,
Heininger House, Dapto Ribbonwood Centre*
2012 GEMBOREE, Bundaberg, Qld
2113 GEMBOREE, Murray Bridge, SA

Lapis now available by  **or**
 **!!**

Members, if you would prefer to receive your
LAPIS by email rather than by snail mail
please send you email address to Colin
Hazell. My email is
col.hazell@Bigpond.com.au

DISCLAIMER: Opinions expressed in LAPIS are
those of the original Authors and do not
necessarily reflect those of the Editor, Committee
or Members of the Northern Districts Lapidary
Club Inc. Persons acting on any opinions, advice
or facts published in the Issue do so at their own
risk.

From the Editor's Desk

Please send me contributions for LAPIS. I am
interested in articles that would be enjoyed by one
and all

Ph. (02) 9888 7650 or Mobile 0410 659
729 Email col.hazell@bigpond.com.au

MEETING DATES for 2011

All meetings are held in the Clubrooms at
Beecroft

Tuesday 12th April, 8.00pm

Saturday 14th May, 2pm

Saturday 18th May, 2pm

Saturday July 16th, 2pm

AGM Saturday 13th August, 2pm

Tuesday 13th September, 8.00pm

Tuesday 13th September, 8.00pm

Tuesday 11th October, 8.00pm

Tuesday 8th November, 8.00pm

Saturday 10th December, 2pm, Christmas Party

Management Committee meets the last Tuesday
of each month except December, at 7.30 pm, in
the clubrooms.

