



# LAPIS

[www.ndlapidary.org.au](http://www.ndlapidary.org.au)

“SHARE YOUR KNOWLEDGE”

VOLUME FORTY SIX - NUMBER TEN JULY 2010

## **CLUB NEWS**

The next General meeting will be on **Tuesday 14<sup>th</sup> September at 8pm.** All members welcome.

### **Guest speaker**

A guest speaker is scheduled for the September meeting. Details available in the club room.

.....

### **FROM THE PRESIDENT**

My first editorial as President!

First, I thank those who have gone before for setting up this vibrant Lapidary club with its high standards of workmanship that we are members of.

Thanks to John Anderson for stepping in reluctantly when a gap had to be filled. He is an excellent leader. Also his committee – those who have stood down and those who continue to serve.

Its “rocks” we are into – gathering, enhancing, loving and displaying. That is what our **Exhibition 2010** is all about - to share our hobby with the world. What can you do to share our hobby? Listen, observe and contribute - to the competition, the display and the helpers list. Our thanks to John Weatherburn for his leadership to make our 2010 exhibition the “best ever.” A good leader needs good workers. Are you there for him?

Perhaps you would be our next “Vice President”. We need to fill this vacancy to be legal with govt. regulations for an Inc. group. It is a “listen and observe” role with many opportunities to give a hand where needed. Yes there are two meetings a month – it is a commitment - if it is your turn then now is the time to put your hand up. I am waiting for your phone call -9869 2314- so please say “YES I can do it”.

An Education Officer is wanted. The duties are to liaise with the instructors and administrate the classes. Also, a Publicity Officer to contact guest speakers for our general meetings. Both are important to the vibrancy of our club and interest of members.

Ed. our Field Trips Officer plans to keep you busy this year with interesting excursions. Look out for these and be part of them. He would love to know his work to arrange excursions for you, is indeed worth the effort.

And don't forget our General Meetings which are for you. We need more than a quorum to keep the Committee happy.

“While you plan for tomorrow - you are young”.

Be involved, be active and be one of us.  
Diane Neasmith.

-----

### **Financial Statement NDLC**

Please note that as requested from the floor at the AGM, a full financial statement including comparison with 2009 figures is appended at the end of Lapis. Diane Neasmith

-----

### **New Members**

We would like to welcome our newest members –

Miss Rogina Torabi of Castle Hill  
Master Elliott Brown of Carlingford  
Miss Tiana Carman of Toongabbie  
Mrs Catherine Stanley of Berowra Heights  
Ms Rebecca Tin of North Rocks  
Mr Malcolm Pearce of Epping

We wish them much enjoyment cutting gemstones and enjoying the other aspects of our Club.

## EXHIBITION NOTES

### RAFFLE TICKETS

If you find a book of 10 raffle tickets enclosed with your LAPIS, please sell these tickets to your family, friends, relatives or even perfect strangers. They are all good value prizes and well worth winning.

Fill in the name and phone number of the buyer on the ticket butts and return the butts with the money to the clubrooms..

You can hand them in to any Committee Member or pop them in a sealed envelope into the slot of the filing cabinet in the cutting room.

Additional raffle tickets are available at the Club rooms.

**1st prize** Solid opal pendant set in sterling silver filigree

**2<sup>nd</sup> prize** Solid opal pendant set in gold plated sterling silver

**3<sup>rd</sup> prize** Solid opal pendant wire wrapped in sterling silver

**4<sup>th</sup> prize** Ear rings with Chrysoprase in sterling silver

---

### COMPETITION.

Please keep going with your preparation of entries for the Club EXHIBITION in October.

We encourage you to enter as many items and as many categories as you can.

It is up to everyone of us to ensure that our Competition Display will again be a highlight of the show.

Copies of the Competition Entry Form and the schedule are available in the Club Rooms, so now is the time to start listing the items that you plan to enter this year. All entries are Free, Entry Forms and the actual entries must be received **by 25<sup>th</sup> September 2010**. Entry forms can be placed in the Competition Box in the Clubrooms or posted to:-

the Competition Committee at  
PO Box 59,  
Beecroft, NSW 2119.

---

### Time to do a Springclean of the basement and shed?

Mineral specimens have proved to be popular items for sale at our Exhibition – so much so that we have sold-off much of the material that the Club has previously acquired. We urgently need to replenish our stocks and so this appeal goes out to all those Members who have ventured afar on field trips across Australia and – as we all do – brought back as many kilograms of rock specimens as the caravan/car springs would allow. Much of the ‘excess’ material from Broken Hill, Mt Isa, etc now forms borders around our gardens or lies ‘buried’ in old boxes under the house.

If this is the case at your home then it might be mutually beneficial should you decide to do an early spring-clean of your old rock/mineral specimens. The Club would greatly appreciate any donations of surplus mineral specimens. Specimens with crystals are always popular as are samples of ore bodies, etc.

Samples can be left at the Clubrooms or contact John Weatherburn (9871 3302) or a Committee Member

if you need assistance with pick-up etc.

---

### Exhibition Show Cases.

In order to assist with our Exhibition layout we need to **know the number of display cases** (regular wooden one or smaller shirt-box size) that will be required. Please let Brian (9878 4073) or Barbara (4393 6168) know asap if:

1. You can fill one of the Club cases from your own collection (you can share with a friend if you wish);  
or
2. You wish to display your Class work in a Club case (teachers please organise);  
or
3. You already have your own display case and wish to include it in the Exhibition.

John Weatherburn

Exhibition Co-ordinator

---

*If I had influence with the fairy who is supposed to reside over the christening (naming) of all children, I should ask that her gift to each child in the world would be a sense of wonder so indestructible that it would last throughout life*

Rachel Carson, 1907-1964. American Biologist and Writer.

# Field Trip Officers Report

## Field Trip Report: Oberon Locality 2010 Duckmaloi – Northern Quarry and Bismuth Mine

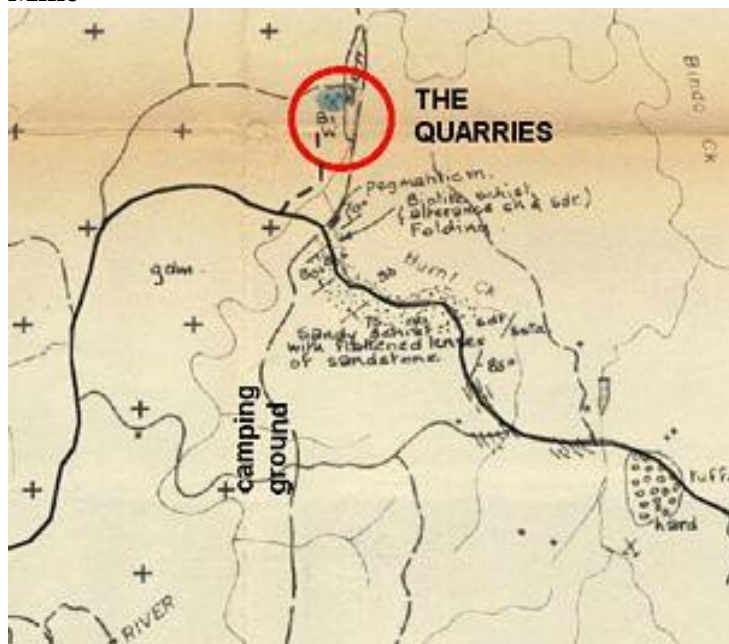


Figure 1 Duckmaloi Northern Quarry

The group met at The Million Acre Rest area at 10:00 am at the junction of Jenolan Caves Road and Duckmaloi Road. Deep dark clouds were racing overhead and the wind was gusting with that Great Dividing Range chill. Twenty minutes later, we got into the cars and proceeded in the Oberon direction.

Parking the car at the Duckmaloi River Bridge, we headed north, jumped the fence and followed the river. Barely had a 100 metres been walked when it began to rain. No, we realised it was sleet so we headed into the tree line and sheltered against the tree trunks. As fast as it came, it went. From here on the weather brightened and the sun came out. As the dark clouds rolled on and were replaced with a brighter grey blue sky. We continued walking along with the raging Duckmaloi beside us, probably 2 m deep and 4-5m wide. The quarry was first sighted as a



Figure 2 Air vent to Bi Mine

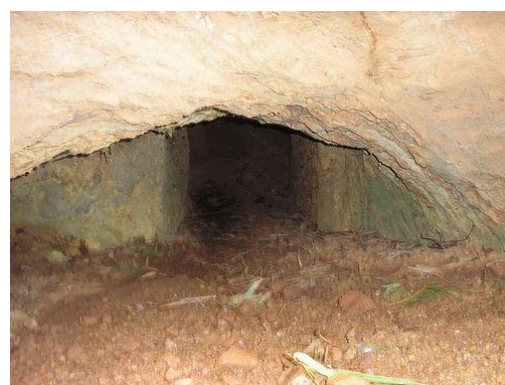
black bump, a little outcrop. As we approached the opening, it proved to be u-shaped with the quarry walls 7 to 10 m high. The quarry base was very flat, green with boggy plants and big pools of water.

On examining the stone, the limestone was friable and disintegrated into small pebble sizes when struck with the hammer. It is probably good for agricultural usage, the quarry locality had also been mined for vermiculite at one time. One piece of marble was found, about the size of three loaves of bread and weighed probably 15kg. It was heavy, so we left it there, not keen to carry it back 3/4 km back to the car.

On examining the limestone, white transparent thin rhomboidal calcite crystals were spotted and a few collected, measuring 4x3x1mm were collected. Examining veinlets in the south wall produced a dark brown banded stone 15mmx20mm x10mm.

This face was climbable so I scaled the wall following three narrow ledges with intervening chimney easy to climb, and got to the top. Only to find some stainless steel abseiling bolts had been placed in the rock. The group got together and moved up the hill to find the bismuth diggings.

For most of the day, wherever you stepped, water was running underneath your feet. The ground



was compact and not porous from the long drought the area had suffered in the past years. A track now meandered in a SE direction down the hill with a number of excavated gullies and shafts, some 15m straight down, five long pits about 20mx5mx3m where crossed, and three small open cuts were examined. One had an audit to the underground mine. The mullock heaps



Figure 3 Ventilation Shaft at NW End of area

around the mine are level and well grassed. An interesting rock was a fine grained banded basalt that probably was gangue rock.

The bank of the Duckmaloi was built up of large rock that had been dumped to a depth of about 10m building up the terrace above the river. The Bismuth extracted had been washed or concentrated by using wash runs in the Duckmaloi. By 1.00 pm we had lunch and headed back towards the cars. The four of us headed back to Oberon and meet at DJ's Café for a hot chocolate before heading home.

-----  
**SEPTEMBER TRIP POSTPONED**

Trip to Ardlethan has been postponed to 2011  
 Possible trips planned for late November to do either a weekend bush camping in the Bulahdelah-Gloucester-Dungog area for andesite, rhyolite, thunder eggs and fossils or a day trip to Kulnura Quarry west of Wyong for Zeoliths.

-----  
**PHOTOS OF FIELD TRIPS**

If you have photos of field trips, can you put them on CD and leave at the club so a pictorial book can be made up of various field trips club members have made. The field trips can be from the past 40 years. We want to see who can produce the oldest club photo. Your contribution may be one photo or a storyboard of the best field trips pics you have. It can include shots of members as well as rocks found and loved to craft items produced from your collecting activities.

-----  
**Mineral Group**

The club is considering holding a minerals group evening. If you are interested in attending, please e-mail Ed at [etzed@optusnet.com.au](mailto:etzed@optusnet.com.au)  
 We will be looking for ideas as what the group can do.

Probable night to be held is Friday evenings.  
 What do you want to get out of a fossils, minerals and raw gemstone group???  
 It will be an informal gathering.  
 Theme of each month will be the months birthstone. Who's got a specimen the furthest distance from Beecroft?

First session to start next term. 1<sup>st</sup> topic is Specific Gravity, bring along your unnamed crystals to be examined. If you have scales that read 1g or 0.1g or 0.01g bring them along.  
 Starting Date to be confirmed.  
 Class fees for term or day fees apply.

-----

**A few images of exceptional minerals that were for sale at the Roselea show (to whet the appetite)**



NB these images are from a very good collection for sale at the show. The prices of specimens reflected the quality. The collector was on site to give history of each piece, which was in itself a rare event. The images shown represent only a small percentage of the collection.



**NOVEMBER R/R - FIELD TRIP.**  
**TUMUT [12-15<sup>th</sup> Nov] and an extension to BEECHWORTH**

Tony Try [for Ed Zbik - FTO]  
 Ph. (02) 4393 6168  
 Mobile: 0417 676 435



**November, Long Tour**

**Adelong - Beechworth**

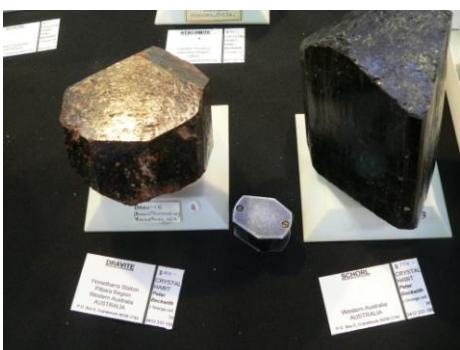
Ed, Tony & Bert  
 Part 1: Adelong Tumut localities (420km)  
 Part 2 Beechworth (with Shepparton Gem Club)  
 One of Adelong's most interesting rural attractions is the Oasis Coloured Sheep Farm, which showcases Australia's largest display of coloured fleeces.



.....  
**December 5<sup>th</sup> Day Only**  
**Warriewood – Turimetta Beach**  
 Along Narabeen Park Drive  
 Fossils, Surf and vitamin D

**DRAFT 2011 Field Trips**

- January** - 4 days Sunny Corner
- February** - Upper Hunter Weekend– Bush Camp
- March** - Gundegai – kimberlite fields???
- April** - Gemboree Bathurst Field Trip, probably Tarana, Lowther or Lett River
- April-May** - Yerranderie Weekend
- June – July** - Yowah Qld
- July – August** – Tingha – Kingston Mine?



.....  
**Cooks Corner**

**The Whatever Cake**

1 cup of (sultanas, or raisins or mixed fruit or dried chopped fruit in any combination) (also a couple of ripe bananas if you need to use them up)  
 1 cup of sugar  
 1 cup of water  
 60 gm softened butter  
 2 cups of self-raising flour



Pre-heat oven to 180 C. (160 C.fan forced). Place butter , sugar, fruit and water in a pan and bring to the boil.

Reduce heat, simmer 5 minutes, set aside to cool. Add flour and bananas if you have them and mix well (a little more flour may be required if bananas are used). You may also add a little mixed spice if liked.

Bake in greased loaf tin for 45 minutes –when cool ice with lemon icing.

Recipe for Lemon Icing is 1 cup icing sugar, juice of 1 lemon, a dessert spoon of softened butter and a little hot water to a stiff paste, then spread over the cool cake.

## DIRECTORY

**President** Diane Neasmith 98692314  
Mob. 0468973320 dneasmith@ozemail.com.au

**Vice President** vacant

**Secretary** Glenn Brown 9617 0446  
[glen.brown@csiro.au](mailto:glen.brown@csiro.au)

[secretary@ndlapidary.org.au](mailto:secretary@ndlapidary.org.au)

**Treasurer** Sharon Waters 98718938  
[sgwaters@tpg.com.au](mailto:sgwaters@tpg.com.au)

**Minutes Secretary** Gibson Owen 94114767  
Mob. 0418227127 [gibson@lawfully.com.au](mailto:gibson@lawfully.com.au)

**Editor of Lapis** Colin Hazell 0410 659 729  
[col.hazell@Bigpond.com.au](mailto:col.hazell@Bigpond.com.au)

**Cutting Room Supervisor** Phil Manton 91445869  
Mob. 0431184110

**Education Officer** vacant

**Field Trips Officer** Edward Zbik 96386586  
mob.0410548480 [etzed@optusnet.com.au](mailto:etzed@optusnet.com.au)

**Librarian** Marijke Noonan 94491107  
Mob. 0410443777 [noonandm@bigpond.net.au](mailto:noonandm@bigpond.net.au)

**Social Secretary** Belinda Barbera  
[belle\\_77@hotmail.com](mailto:belle_77@hotmail.com)

**Publicity Officer** vacant

**Gem Council Delegate** Barbara Try 4393 6168

[twotrys@bigpond.net.au](mailto:twotrys@bigpond.net.au)

**Committee Member** Tony Try 4393 6168

[twotrys@bigpond.net.au](mailto:twotrys@bigpond.net.au)

**Web Master** Alex Maitland

[ammaitland@optusnet.com.au](mailto:ammaitland@optusnet.com.au)

**Club Telephone Number** 9484 0014

**Public Officer** Brian Burns 9878 4073

**Postal Address** Secretary  
Northern Districts Lapidary Club  
PO Box 59  
Beecroft NSW 2119

~NORTHERN DISTRICTS LAPIDARY CLUB INC.  
holds the majority of its monthly meetings in the Beecroft Community Centre, Beecroft Road, Beecroft at 8pm on the 2<sup>nd</sup> Tuesday of each month except January. Variation in date and time of meetings are published in Lapis, and on the club website.  
The Entrance to the clubrooms is on the railway side of the building. ~

**Membership Fees:** effective from 01/07/2009  
Entrance/ Annual Subs

Full Member aged 18 or more yrs	\$25	\$20
Junior member aged 10 to 17 yrs incl.	\$10	\$10
Family Concession	\$40	As Above
Junior Associate member aged less than 10 yrs		No charge

In case of a person being admitted to membership on or after January 1<sup>st</sup> in any Club financial year, the subscription fee that year shall be half the amount.

-----  
**THE CLUB FINANCIAL YEAR IS FROM  
JULY 1<sup>ST</sup> – JUNE 30<sup>TH</sup>**

-----  
**WEBMASTER** – Alex Maitland  
Mail to: [ammaitland@optusnet.com.au](mailto:ammaitland@optusnet.com.au)

-----  
**CURRENT CLASSES & ACTIVITIES  
HELD IN CLUB ROOMS**

**Monday** 7.30pm CABOCHON CUTTING  
Instructors Glenn Brown 9617 0446  
7.30pm SILVER JEWELLERY  
Instructor Johan ten Hoedt 9484 6521

**Tuesday** 9.00am SILVER JEWELLERY workshop  
Contact Ed Bentley 94985748

**Wednesday** 10.00am SENIORS ALL DAY Workshop  
Contact George Hunter 9871 2126  
7.30pm SILVER JEWELLERY  
Instructor Brian Burns 9878 4073

**Thursday** 7.30pm CABOCHON CUTTING  
Instructor John Weatherburn 9871 3302  
7.30pm FACETING CLASS  
Instructor Norm Fitzpatrick 9876 1815

**Friday** CASUAL COMPETITION CUTTING  
No teacher – self help - enquiries please  
contact John Weatherburn – 9871 3302

**Saturday** 1.00pm Family CLASS  
Instructor Paul Khoo  
with Corin Sadlier 9869 7775

**CLASS FEES** can be paid to your class teacher, also  
annual membership fees when due and any purchases  
from the shop.

**CLASS, CASUAL & WORKSHOPS FEES –  
EFFECTIVE FROM 01/01/09**

First Class – per term (School Term)	\$30
Any Additional Class – per term (School Term)	\$25
Casual Use of Machinery – per attendance	\$5
Workshops – 2 day weekend	\$25
1 day (plus materials)	\$15

Workshop Weekends: Subject, Date, and requirements  
will be printed in this newsletter as they occur.

There are waiting lists for some classes

---

**DATES OF INTEREST**

**October 2-4 GEMKHANA**

**October 29-30-31**

**Northern Districts Lapidary Club**

Biennial Gem Show

Beecroft Community Ctr,

Beecroft Rd, cnr Copeland Rd,

Beecroft.

**2011 – GEMBOREE – NSW – Bathurst –  
April 22-25**

---

**Lapis now available by  or  !!**

Members, if you would prefer to receive your  
LAPIS by email rather than by snail mail  
please send you email address to Colin  
Hazell. My email is  
[col.hazell@Bigpond.com.au](mailto:col.hazell@Bigpond.com.au)

DISCLAIMER: Opinions expressed in LAPIS are  
those of the original Authors and do not  
necessarily reflect those of the Editor, Committee  
or Members of the Northern Districts Lapidary  
Club Inc. Persons acting on any opinions, advice  
or facts published in the Issue do so at their own  
risk.

---

**From the Editor's Desk**

Please send me contributions for LAPIS. I am  
interested in articles that would be enjoyed by one  
and all.

Ph. (02) 9888 7650 or Mobile 0410 659 729

Email [col.hazell@bigpond.com.au](mailto:col.hazell@bigpond.com.au)

**MEETING DATES**

**2010**

Tuesday 14<sup>th</sup> September.....8.0pm

Tuesday 12<sup>th</sup> October .....8.0pm

Tuesday 9<sup>th</sup> November .....8.0pm

**Saturday 11<sup>th</sup> December.....1pm**

**Christmas party**

**Management Committee** meets the last Tuesday  
of each month except December at 7.30 pm, in the  
clubrooms.

---

*Do your work with your whole heart and you will  
succeed – there is so little competition.*  
Elbert Hubbard, 1865-1915 American Writer

Dear Members

The Treasurers report is re-printed in full with last years figures on the right. Note that the error was in the last three lines. The Ing Term Deposit was not correctly extended and created the error. I did not pick this up during the audit. My apologies for this. The reports are now all in order and available to you.

Diane Neasmith Honorary Auditor.

**NORTHERN DISTRICTS LAPIDARY CLUB INC.**

Balance sheet as at 30 June 2010	<u>2010</u>		<u>2009</u>	
Plant Machinery, Furniture & Fittings, Equipment	<b>17072.30</b>		19843.39	
less 10% depreciation	<b>-1707.23</b>		-1984.34	
Less Sale of Machinery	<b>-735.00</b>		-100.00	
Less fully depreciated machinery			-4419.00	
	<b>14630.07</b>		13340.05	
Add Purchases	<b>0.00</b>	<b>14630.07</b>	3732.25	17072.30
Library	<b>3054.44</b>		3425.73	
Less 5% depreciation	<b>-152.72</b>		-171.29	
Less books culled	<b>0.00</b>	<b>2901.72</b>	-200.00	3054.44
Current estimated re-saleable value of Stock in Shop	<b>11936.00</b>	<b>11936.00</b>	12130.90	12130.90
current estimated value of Rock materials on hand	<b>8745.00</b>	<b>8745.00</b>	8745.00	8745.00
Reconciled Balance in No 1 cheque account	<b>5627.62</b>		22220.08	
Reconciled Balance in No 2 cheque account	<b>747.62</b>		183.42	
Cash in hand			50.00	
Petty Cash	50.00		50.00	
Shop	30.00		30.00	
Treasurer	80.00	<b>160.00</b>	80.00	22563.50
Deposits in ING investment account	<b>41223.31</b>	<b>41223.31</b>	23793.73	23793.73
Total Assets		<b>85971.34</b>		87359.87
MEMBERS EQUITY				
Members Equity at 1 July 2009		<b>87359.87</b>		76834.88
Net movement in Members' Equity		<b>-1388.53</b>		10524.99
Members Equity at 30 June 2010		<b>85971.34</b>		87359.87

SIGNED: Nivea Adami, Hon.Treasurer

I have examined the records of the Northern Districts Lapidary Club Inc. for the year ended 30 June 2010.

In my opinion the attached Income & Expenditure account and Balance Sheet give a true and fair view of the Club's affairs as at the 30th June 2010 the results for the year. Honorary Auditor Diane Neasmith.

**YEARLY FINANCIAL SUMMARY JULY 2009 TO JUNE 2010**

	<b>2010</b>	<i>2009.00</i>
	<b>22220.08</b>	<i>10031.91</i>
Reconciled Balance at the 1st July 2009		
Deposits		
Joining Fees	<b>505.00</b>	<i>575.00</i>
Annual Fees	<b>3810.00</b>	<i>3102.50</i>
Class/Term fees	<b>4870.00</b>	<i>4805.00</i>
Casual use of machinery	<b>2080.00</b>	<i>1904.50</i>
Shop Sales	<b>2858.40</b>	<i>3650.50</i>
Raffles @ meetings	<b>375.15</b>	<i>346.00</i>
Raffle -Tombola	<b>101.00</b>	<i>110.00</i>
Raffle-Hampers	<b>412.00</b>	<i>243.00</i>
Phone bottle receipts	<b>0.90</b>	<i>22.10</i>
Weekend Workshops	<b>200.00</b>	<i>290.00</i>
Exhibition		<i>22104.86</i>
Miscellaneous		<i>896.00</i>
Break-in insurance claim	<b>805.00</b>	
Sales of G&L News	<b>0.50</b>	<i>6.00</i>
Sale of excess machine	<b>1435.00</b>	<i>100.00</i>
Donations from Green Gem Club.	<b>1730.27</b>	
Interest received from No 1 account	<b>48.60</b>	<i>74.66</i>
Mohtly Deposit Totals	<b>19231.82</b>	<i>38230.12</i>
Reconciled balance at month end.	<b>41451.90</b>	<i>48262.03</i>
Accounts Paid		
Rent	<b>1610.20</b>	<i>1610.20</i>
Electricity	<b>1138.40</b>	<i>1459.85</i>
Cutting Room Deposits	<b>3872.32</b>	<i>2053.40</i>
Plant and Machinery		<i>3844.25</i>
Laser Printer	<b>507.65</b>	
Computer	<b>684.00</b>	
Faceting machine	<b>909.81</b>	
Lapis Printing and postage & stationery	<b>1834.56</b>	<i>1650.72</i>
Postage & Stationery other	<b>351.61</b>	<i>692.42</i>
Australia Post (mailbox) 1 year	<b>79.50</b>	<i>75.00</i>
Refreshments and cleaning	<b>973.89</b>	<i>1496.71</i>
Raffle - books / prizes	<b>69.85</b>	<i>77.88</i>
Phone	<b>599.85</b>	<i>579.09</i>
Goods for Resale	<b>1198.05</b>	<i>781.34</i>
Class / Workshop supplies	<b>160.00</b>	<i>301.12</i>
Library Books & DVD's	<b>339.24</b>	<i>480.00</i>
Library Subscriptions / Website	<b>191.65</b>	<i>225.64</i>
Deposit	<b>483.00</b>	
Exhibition 2010 Supplies / Equipment	<b>1114.05</b>	<i>7061.39</i>
Hall deposit	<b>100.00</b>	
Miscellaneous		<i>1617.00</i>
Lodgement Fees - Office of Fair Trading	<b>47.00</b>	<i>45.00</i>
Public Liability Insurance - Webster Hyde Heath	<b>310.75</b>	<i>250.00</i>
Content Business Pack Insurance	<b>698.30</b>	<i>600.10</i>
Personal Accident Insurance - G&L Council	<b>117.00</b>	<i>52.50</i>
Tip Fees	<b>53.00</b>	
Trophy, Masks, Alarm	<b>47.40</b>	
Gift voucher	<b>115.00</b>	
Christmas Party Food	<b>424.20</b>	<i>558.27</i>
Instructors Luncheon	<b>69.25</b>	
Reimbursement of Stole Float	<b>80.00</b>	

Speakers fee and gift	<b>51.25</b>	
Channel setting Jewellery tool.	<b>569.70</b>	
Purchase of Machinery (Glen Young)	<b>700.00</b>	
Fire Blankets	<b>59.80</b>	
Credit Card Merchant Fees	<b>264.00</b>	<i>530.07</i>
Monthly Payment TOTALS	<b>19824.28</b>	<i>26041.95</i>
Funds transfer to ING at call account	<b>16000</b>	
Reconciled Balance at 30 June 2010	<b>5627.62</b>	<i>22220.08</i>
Balance in No 2 Account	<b>747.62</b>	<i>183.42</i>

