



LAPIS

www.ndlapidary.org.au

“SHARE YOUR KNOWLEDGE”

VOLUME FORTY FIVE - NUMBER TEN JULY 2009

CLUB NEWS

The next General meeting will be on **SATURDAY 18th July 2009 at 3 pm** in the Club rooms - all members welcome. Colin Hazell will give a presentation on the Oddities found in Gemstones.

New Members

We would like to welcome our newest member –

- Melissa Donaldson - Turramurra

We wish Melissa many long hours of enjoyment cutting gemstones and enjoying the other aspects of our Club.

PRESIDENT'S REPORT

It has again been a sad time for the Club with the passing of two more members – Ron Crocket and Mark Young, both of whom were active in different aspects of the Club's activities. Ron has more recently been involved with the monthly printing, collation and mail-out of LAPIS while Mark ran wax carving workshops until his illness last year. On behalf of all their friends I wish to express our sincere condolences to their families. More details of their involvement are presented in the Vales below.

On a happier note it is pleasing to acknowledge the various membership milestones of eight members (see following notice), especially for Milo Taragel who has reached his 30-year mark. Congratulations to each of you.

On a final note, with the approaching AGM in August, I would ask you all to read the article

below on 'Generational Change'. The recent deaths of several long-standing members, plus the declining health and involvement of some of our older supporters, makes such a change inevitable, and I believe that it is time to initiate and encourage such a change now.

Brian Burns, President

Membership Awards

Congratulations to the following Club Members who have reached their significant membership milestones over the last few months:-

30 Years Membership

- Milo Taragel

20 Years Membership

- John Andersen
- Renate Pirwitz

10 Years Membership

- Ed Bentley
- George Haynes
- Mary Lillis
- Tony and Joan Williams



Thank you all for your loyalty and continuing support of the Club. Awards will be presented at our August General Meeting for those who can attend.

GENERATIONAL CHANGE

I believe that it is time for a significant *generational change* in our Club's management. I would ask all members to consider joining the Committee, but especially those who have joined our Club over the last ten years – the next generation.

We have been fortunate to have a good number of 'younger' members who have served on Committee over the years and made very

significant contributions. However, it is also true to say that the overall direction of the Club's activities has been primarily influenced by the older generation.

It is essential that we continue to build up our core of 'newer' members as we progressively replace some of our longer serving members who, for a variety of reasons, may be less available in the future and are well deserving of the opportunity to begin to scale back their often considerable involvement in the Club. This is most certainly *not* to say that their continued involvement is not desired, but rather that it should be at whatever level is most suited to their desires.

What is meant by 'Generational Change'?

Our Club's history began over 40 years ago when a group of keen lapidarists got together to form the NDLC. Their subsequent activities over the years have largely established the traditions and practices that we still observe today. Our Constitution has only required relatively modest 'updating' over that time and still reflects the 'intent' of these early founders. This Constitution has served us well and we would do well to continue to follow this intent.

However the early Club was designed for a time that has changed quite significantly in terms of the social structure and requirements of many of today's more recent members.

For example:

- Most families now seem to require both parents to work full time;
- Work 'pressures' to meet deadlines, raise children, etc allow less time for people to spend on their hobbies;
- Other interests and demands on people's 'time' seem to have increased;
- People now expect to complete their stones or jewellery in a shorter time. They want to produce items of good quality that are suitable for normal practical use, and may be less interested in pushing for that 'little bit extra' that would be expected if wanting to compete at the top levels;
- Some of the activities and interests that really bonded our founding generation, such as extended field trips and social functions, are just not practicable for the bulk of the new generation – they simply don't have the time;

- Look at those who own, and participate in, our 'caravan' field trips – hardly anyone under the age of 60!
- Due to other competing lifestyle interests, the Lapidary Club is no longer the prime hobby/social interest for many members – as it was in the past.
- The younger generation are more independent and want/expect to set their own directions that will fit better with their social life and aspirations;

What might a significant 'Generational Change' mean for our Club? This is hard to forecast of course but several 'possibilities' come to mind. Whether they are considered "Pros" or "Cons" may depend on your age! Remember – these are just my thoughts, they may or may not ever eventuate! Future Committees may have better ideas.

- The younger generation may take a greater interest in the management of the Club if they can see real opportunities to influence the Club's future directions.
- The increasing number of members with internet and electronic communication is a good trend and should continue to increase and be encouraged although it does disadvantage those older members who are not so computer literate.
- There may be changes in the way the Committee functions. Greater use of present computer technology means that tele-conferencing and group networks could reduce the need for holding regular monthly Committee meetings at the Clubrooms.
- Some Committee positions might operate by submitting written (electronic) reports when everything is running normally and only attend in person when they have some specific issue that needs Committee involvement.
- A possible shift in emphasis towards class projects, skills and equipment that provide a faster 'return' in terms of completed articles.
- A possible decrease in members willing to participate in Club or national Competitions.
- Fewer Club social activities, field trips, etc.

Regardless of what changes may or may not occur from a significant generational change in the management of the Club, the challenge for the Committee will be to carefully consider and plan any changes while remaining as true to the original Club ideals as possible. The challenge for the older generation will be to accept that such changes may be essential for the future success and growth of the Club.

Having said all that, I sincerely invite the next generation of the Club to step forward in even greater numbers at the AGM to take up senior Committee positions and help to guide the Club to an even better future.

Brian Burns

FROM THE COMMITTEE:

Safety issues

In attempting to learn silver jewellery making and in toying with the idea of carving stone, I decided to buy myself a small high-speed rotary grinder with flex-shaft attachment. To inform myself on the use of such machines so that I could make a decision about the best tool for my needs, I purchased a small book entitled "Making the most of your Flex-shaft" by Karen Christians because it described many of the tools and attachments plus maintenance and safety issues in using such tools.

Its probably pretty easy to slip into the mind-set that small tool, small power equals small risk. The danger of such an attitude is that we minimise or neglect the impact of speed of operation of the small machine (many operate in the 8,000 to 30,000 rpm or higher range).

An example here is comparison of surface speed of a 200mm diameter grinding wheel travelling at 1000rpm = 628 metres per minute (37.7 kph) where as a 10mm grinding point travelling at 20,000rpm = 628 metres per minute (37.7 kph).

In both cases the surface speed is identical, hence a particle flung off either wheel will travel the same distance with the same impact.

Best consider as well that we tend to work at a much closer distance to the smaller tool when doing the finer work. This increases the chance of dust inhalation, grit and wire (from brushes)

impact and raises the chances of getting clothing, hair and jewellery caught in the works.

Best management? Safety goggles or face shields, masks appropriate to the type of dust hazard present and a little more attention to the loose bits.

Next issue is posture. People becoming engrossed in the fine detail of quality work may well find themselves undertaking that activity for protracted periods of time, somewhat careless of posture till they go to move then finding a few aches and pains they didn't have before. This may be OK for the occasional activity, but if it is a regular occurrence some more care should be taken not to induce a substantial injury, by checking work heights and distances and postures.

Remember I mentioned speed of operation? If that is coupled with out-of-balance tools then it is quite possible to induce a rapid and catastrophic failure of the tool that may pose a risk of lacerating or penetrating the operator. Likewise if too much pressure is used on a tool, or the shaft of the attachment is too long or too light then a rapid deformation of the attachment to approximate a propeller may occur, with damage to tools and user.

Lastly, be careful of chuck keys and spanners, being sure they are well out of the road before restarting. Preferably turn off machinery to change tools. The accidently started machine can turn a key into missile or a bruising experience, perhaps even a fracture or cut.

All tools should come with a set of safety instructions. Be pro-active; read them before using your particular type because most will have something unique about them. Its much less painful than the "if all else fails read the instructions" approach and may be a lot cheaper too.

Colin Hazell

G & L Council Snippets

Judging for the 2010 GEMBOREE in Tasmania will be held at the NDLC clubrooms during the second weekend of February, 2010.

All J&R State Delegates will meet on the weekend of the 31st October-1st November, 09 to

discuss the introduction of a standardised method of teaching judges in the various lapidary crafts.

A carving course for potential judges is being held at the Central Coast Lapidary club over the weekend of the 11th and 12th July, 09. Any persons interested in doing this course should contact Nelson Robertson on Ph. [02] 4385 4495

~

Gold Plating

Gold plating is available at the Club. Items must be Club member's own work and must be very clean and well polished.

The cost is \$3.00 for a ring or equivalent size and \$5.00 for larger items - for example a pendant.

Please leave your article in an envelope with the appropriate amount on the notice board for Lewis Calwell. Items will be returned within two weeks.

Any questions please ring Lewis on 9477 2182.

~

A Faceting Machine will be auctioned to members at the Annual General Meeting 15th August 2009. There will be a modest reserve put on this machine

~

REMINDER - SILVER CASTING WEEKEND

11 & 12 July,
9am to 3pm

Members are invited to join our silver casting group. Items needed for the course are on our web site. You may place your name on the list at the cutting room. There is a limit of 10 persons in the class. Ring me if you have any queries. You may ring me on 43530240 or 0414564174.

Jean Macleay

~

NDLC FIELD TRIP



NUNDLE "GET-A-WAY"

The Club's annual few days at Nundle have been organised for the following days in November:

Friday 13th, Saturday 14th, Sunday 15th & Monday 16th

Please add your name[s] to the list on the Notice Board in the club rooms if you would like to be part of this relaxing weekend.

Powered Sites: I will confirm the number of sites required as it gets closer to the time, based on the names on the list on the Notice Board.

Cabins: Members requiring cabins should also place their names on the list. **However, please make your own bookings for the cabins as soon as possible.**

The telephone number for the Fossickers Tourist Park Nundle is [02] 6769 3355 or Toll Free 1 300 366 676

For any general enquiries about the weekend please contact Tony Try on Tel; [02] 4393 6168 or Mobile 0417 676 435

~

NUNDLE 'EXTENSION'
[For those members that do not want to go home !!]

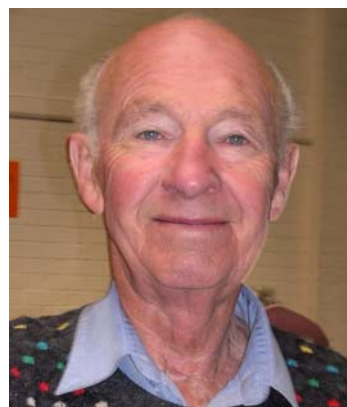
A program for this period of 7/8 days has been placed on the club Notice Board. Members are invited to join us for part or all of this "Nundle Extension". It would be appreciated if you would add your name[s] to the list on the Notice Board if you are interested in taking part in these additional few days.

For any general enquiries regarding this proposal please contact Tony Try on [02] 4393 6168 or Mobile 0417 676 435

Tony Try

~

Vale Ron Crockett



Ron Crockett joined the Northern District Lapidary Club at the active age of 61, and for 23 years up until his untimely death on Thursday evening the fourth of June, served the interests of the Club unstintingly. He is survived by his loving partner, Rosemarie, and by his children, Daryl and Cheryl, and his sister, Madge and their families. But so generous was the love and concern that Ron displayed for others, that he is also greatly mourned by a large company of friends whom he helped and served loyally and consistently to the last.

We are paying tribute to a multi-skilled tradesman and technician who in his latter years turned his hand and intellect to whatever practical expression or invention would meet the needs of his loved ones and comrades. Ron's career as a radio engineer fitted him admirably to use his uncanny ability not only to fix electrical gadgets of all kinds, but also to undertake his numerous handy man skills especially on behalf of the aged and the lonely. A perfect example of this expertise was his hobby of re-creating and constructing traditional stringed instruments, and playing them with his music group. What better person could be found among our members to help maintain the activities of a lapidary club!

Ron will be remembered in the Club as the quiet achiever. He unobtrusively went about his volunteer duties, arranging the sound system downstairs as well as upstairs for our exhibitions, choosing the background music, staffing the front desk at the entrance to the hall, and between times using his imagination in the Cutting Room, designing and grinding and polishing the door prizes for the next Biennial. But his contribution to the Club did not stop there. In between his faithful visits to old companions, he would fit in his traditional responsibilities as the Lapis mailman – addressing, folding and bulk posting our monthly journal, and helping with humour and cheerfulness whenever and wherever he could.

In the rare glimpses we have gained of his private life, it is clear that Ron Crockett has always been held with respect and warm affection in the home, as well as by those of us who were privileged to become part of his 'adopted family'. Rosemarie describes her beloved partner as 'a saint' and, at the funeral service; Cheryl called him 'a true humanitarian' with which we heartily concur. We

join in honouring the greatness of a life characterised by humility and practical love.

Eric Stevenson

~

Following is a poem that was written by Ron Crockett and was read at his funeral.

'The Bullfrog and the Cricket'

By Ron Crockett

*It happened one spring morning
in the middle of the pond,
the domain of Tommy Bullfrog,
in his waterhole so fond.*

*Now he was lying straddled,
on his slightly pitching log,
when up came Jimmy Cricket,
unaware of Tommy Frog.*

*In search of some stray insect,
a morsel for to eat,
disregarding all his mother taught,
and landed very neat.*

*On the back of Tommy Bullfrog,
who through fright did almost die,
but whose legs reacted quickly,
and lit up towards the sky.*

*Now it is only natural,
that he'd be so very mad,
at that silly little cricket,
for the fright that he just had.*

*And with rage and fear combining,
made a most offensive sight,
and since then has sought that cricket,
every day and every night.*

*Now for Jimmy it is certain,
that he thought the end had come,
he has never since been hunting,
or been seen out in the sun.*

*So on nights that you do hear him,
make his silly little sound,
you will know that for the present,
that 'till now he's not been found.*

~

VALE MARK YOUNG



It was the early 1970's when the lapidary movement held an exhibition at the Sydney Town Hall. There I saw a most beautiful carving of three dolphins leaping out of the waves. I learned that this piece was by Mark Young and he later told me that he had collected the slate from the ocean ledge at Long Reef, on the northern Sydney coastline. At the next exhibition he displayed a tortoise where the shell was made from the tessellated Yowah opal/iron stone. The legs, belly and head were cast silver. At that stage I met him and he expressed interest in joining our club, and did so.

To have such an eminent city jeweller join us I think was quite an honour and then he offered to run workshops.

So it came to the point where we got to know this brilliant, warm, funny, giving man. He obviously loved teaching us and we learned a great deal from him. He challenged us beyond what we thought we were capable of.

After his retirement Mark was able to teach us more frequently so that over the last few years we have enjoyed his workshops, and listening to his wicked jokes.

Many of our members who came to a hurdle were welcomed into his home where he helped us through our problem.

He had had some health problems but starting last November he has suffered a series of strokes and finally a heart attack.

We are much saddened to have lost such a wonderful man.

Jean Macleay

Muogamarra National Park

Muogamarra is a place of unique beauty and scientific value only open to the public for 6 weekends a year.

Muogamarra, pronounced Moo-o-ga-marra, is an Aboriginal word of the Awabagal. It means 'preserve the future', symbolising the purpose for which the area was dedicated. The reserve covers approximately 2,500ha and is managed by the NSW National Parks and Wildlife Service to preserve its wonderful diversity of flora and fauna for scientific and educational purposes.

The Muogamarra Nature Reserve is open to the public on annual open days for 6 weekends in August and September. A number of guided walks are scheduled each weekend during this period.

The park is open from August 15 and closes September 20. The cost to visit is \$6 for Adults and \$3 for children.

For further details ring (02) 9585 6444. The park is on Berowra Water Road, Berowra Water.

Chef's Corner



MUESLI SLICE

90 grams of Butter (3ozs)
¼ cup brown sugar
¼ cup of honey
2 tablespoons plain flour
1 cup quick oats
½ cup of coconut
2 tablespoons sunflower seeds (kernels)
½ cup chopped pecans or walnuts
A few chopped apricots
¼ cup of sultanas

Cream butter and sugar add honey.

Mix until smooth.

Stir in remaining ingredients.

Bake in moderate oven for 20 minutes.

WANTED

John Parker who taught the Tuesday class for some years is looking to buy a draw plate, preferably 2mm and less. If any member has one that is excess to your needs give me a ring and I will arrange to get it to him.

Jean Macleay 43530240

HANDY HINT No 38 Silver soldering

There are three grades of solder, Easy, Medium and Hard. They melt at different temperatures so if your work has several joints use hard for the first then medium and finally easy as it requires less heat. Hard melts at 745 - 778 degrees centigrade, medium 720 - 765 and soft 705 - 723 degrees c.

Make sure that the surfaces to be soldered fit together tightly without any gaps. If necessary hold them together with iron binding wire. The work must be free from grease, dirt or finger prints. Clean with fine wet and dry paper if in doubt.

Using a fine sable brush apply the Aurflux to the join. Cut off small snippets from your wire solder and using the brush dipped in a little amount of aurflux pick up the solder pieces separately and place them on the join. Remembering, too little is better than too much.

Gently heat the whole piece bringing the torch closer to increase the heat on the actual joint area. Keep the flame moving until the work turns bright red and the solder melts and flows. Solder runs to the hottest part so by keeping the flame moving you can draw the solder right through the join.

If iron binding wire is used it must be removed from the work before placing it in the pickle. As pickle is used to clean sterling silver it absorbs copper ions. The introduction of iron or steel into the pickle creates an electrical charge causing a thin copper coating on items in the solution. This is more pronounced as the solution ages. This is why only copper, brass or wood tongs should be used with pickle as they will not create a charge.

Norm Savage

The June General Meeting – Trivia Quiz

In lieu of a guest speaker at the June General Meeting we had a Trivia Quiz. The members formed three teams and answered a variety of gemstone related questions.

The time keeper was “Old Father Time” Colin Hazell who had an hour glass which only took 12 seconds, while the questions were read by the

“Absent Minded Professor” Tony Try who forgot where he was some of the time.

It was a bit of fun and the team “Blue Danube” won followed closely by the “Rubies” and the “Blue Birds”.

Some of the questions that were used in the quiz are listed below for those members who could not attend.



The Absent Minder Professor (Tony Try)

Questions:

1. What is the stone the Club's Magazine is named after?

Answer:- Lapis Lazuli

2. Name five green natural faceted stones?

Answer:- Sapphire, Emerald, Tourmaline, Peridot, Epidote, Demantoid Garnet, Diopside and Green Quartz.

3. Name 4 transparent blue gemstones

Answer:- apatite, beryl, diamond, iolite, sapphire, tanzanite, topaz, tourmaline, zircon

4. Name 4 opaque or translucent blue semi-precious stones

Answer:- agate, amazonite, chalcedony, chrysocolla, labradorite, lapis lazuli, moonstone, opal, sodalite, spectrolite, turquoise, tiger eye

5. What is the element responsible for both the red in ruby and the green in emerald?

Answer:- chromium

6. What is the reflection seen in gems like moonstone and bronzite, called?

Answer:- Schiller

7. How many planes of cleavage can be found in feldspar gems?

Answer:- 3

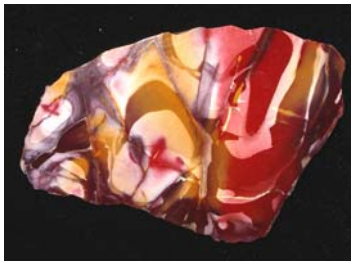
More questions and answers next time.



“Old Father Time” – Colin Hazell

~

Mookaite Jasper



Mookaite (sometimes spelled Mookite, mookalite, mookerite or just Mook Jasper) is a colourful Jasper from Western Australia. It is a warm flood of reds, yellows and browns. It is formed as a sediment in erosion zones and a filler in cracks.

Mookaite is named for where it was first found – in outcrops, principally on Mooka Station (a sheep farm of around 700,000 acres) on the west side of the Kennedy Range in Western Australia. The Kennedy Range itself is located approximately 90 miles east of Carnarvon and 25 miles to the north west of Gascoyne Junction, a small town of around 60 people, and located at the first (heading west from Carnarvon) sealed crossing of the mighty (usually dry) Gascoyne River. According to locals, the Aboriginal word “mooka” means “running water”, no doubt in reference to the many fresh water springs that feed Mooka Creek. Mookaite is said to help counter the effects of aging! This gemstones is believed to bring us into the “here and now”, aiding with problem assessment and decision making.

~



The Bathtub Test

During a visit to the mental asylum, I asked the Director how do you determine whether or not a patient should be institutionalised.

'Well,' said the Director, 'we fill up a bathtub, then we offer a teaspoon, a teacup and a bucket to the patient and ask him or her to empty the bathtub.'

'Oh, I understand,' I said. 'A normal person would use the bucket because it's bigger than the spoon or the teacup.'

'No.' said the Director, 'A normal person would pull the plug. Do you want a bed near the window?'

•••••

VERY IMPORTANT REMINDER !!!!!

It is very important that if you change your address and/or email contact details it is in your own interest to notify me of the new details otherwise I cannot send you the Club's magazine
(Lapis)

Editor

Murphy's Lesser Known Laws

Cont:

- 5. Nothing is foolproof to a sufficiently talented fool.
- 6. If you lined up all the cars in the world end to end, someone would be stupid enough to try to pass them, five or six at a time, on a hill, in the fog.
- 7. The things that come to those who wait will be the scraggly junk left by those who got there first.
- 8. The shin bone is a device for finding furniture in a dark room.
- 9. A fine is a tax for doing wrong. A tax is a fine for doing well.
- 10. When you go into court, you are putting yourself into hands of 12 people who weren't smart enough to get out of jury duty.

•••••

DATES OF INTEREST

- July 18** NORTHERN DISTRICTS LAPIDARY CLUB
General Meeting Saturday at 3 pm at the Clubrooms Beecroft all members welcome
- July 11 & 12** NORTHERN DISTRICTS LAPIDARY CLUB
Casting weekend
- July 18-19** Campbelltown & Districts Lapidary Club – Annual Gem Mineral & Jewellery Show
Campbelltown Civic Centre, Queen St, Campbelltown NSW
9am to 4pm (02) 4628 3608 (Ron) for more info
- Aug 7-9** Bankstown & District Lapidary Club – Invites you to “Treasures Down Under”
At Bankstown Arts & Craft Centre, Dale Pde, Bankstown. Fri & Sat 10am to 4pm,
Sun 10am to 3pm
- Aug 15** NORTHERN DISTRICTS LAPIDARY CLUB
General Meeting Saturday at 3 pm at the Clubrooms Beecroft all members welcome
Following the General Meeting the Annual General Meeting will take place.
- Aug 15-16** Blaxland Gem Club: Annual Exhibition, Glenbrook Community Hall, Great Western
Highway Glenbrook
- Aug 22-23** Carlingford Show, Roselea Comm Ctr Pennant Hills Road Carlingford

2010 – GEMBOREE – Tasmania – Devonport – April 2-5

2011 – GEMBOREE – NSW – Bathurst - April 22-25

For information on Interstate and Overseas Gem Shows see back pages of the Gem & Lapidary News available in clubrooms on shelf near library.



Northern Districts Lapidary Club Shirts

Good quality polo shirts are available from the shop for field trips and future GEMBOREE'S.

They are royal blue with the Club's badge embroidered above the pocket on the left hand side of the shirt.
Cost is \$38.00. Sizes range from small to XXXL.

If your size is not available in the shop please complete the form below.

Please indicate the size and number you require. Name:.....

Size:..... Number:.....

Return to Secretary NDLC – PO Box 59, Beecroft NSW 2119

Lapis now available by  or  !!

Members, if you would prefer to receive your LAPIS by email rather than by snail mail please send you email address to Barbara Try. My email is twotrys@bigpond.net.au