



# LAPIS

[www.ndlapidary.org.au](http://www.ndlapidary.org.au)

"SHARE YOUR KNOWLEDGE"

VOLUME FORTY FOUR NUMBER TWO OCTOBER 2008

## CLUB NEWS

The next General meeting will be on 14<sup>th</sup> October 2008 at 8.00pm in the Clubrooms at Beecroft - all members welcome.

Following the General meeting we will have a guest speaker. Her name is Jan Plain, a Dietitian who has worked in both hospital and the public consultancy arenas of dietetics, currently working as the dietitian for mental health issues at Macquarie Hospital and as a part-time lecturer in mental health /dietetic issues at Sydney University.

## New Members

We would like to welcome our newest member –

- Jill Lutton - Gordon

We wish Jill many long hours of enjoyment cutting gemstones and enjoying the other aspects of our Club.

## PRESIDENT'S REPORT

Welcome to two of our 'younger' members Henry Scheele and Glenn Brown who have assumed the roles of acting Vice President and acting Secretary respectively until they are formally elected to Committee at our next General Meeting. This still leaves the positions of Field Trips Officer and Social Secretary vacant so please see if you can spare the time to take on one of these positions. The roles are not difficult and there is plenty of advice and assistance available.

We now move into the final phase of preparations for our Exhibition in October. Thanks to all who have been involved in the preparations to date but

there will no doubt still be some small jobs to be done – perhaps at short notice – so please try to be 'available' if called upon.

As we prepare to go to the press with Lapis it was very sad to learn that Fred Hulme has passed away after a long illness. On behalf of all Club members I would like to extend our sincere sympathies to his wife Dot and their family at this sad time. We will have a Vale for Fred in the November Lapis

Brian Burns

## FROM THE COMMITTEE:

### **Dates for your Diary**

Next year we will have five Saturday General Meetings, they are:

9<sup>th</sup> May 2009  
13<sup>th</sup> June 2009  
18<sup>th</sup> July 2009  
15<sup>th</sup> August 2009  
12<sup>th</sup> December 2009, this is also the Christmas Party.

They will start at 3.00pm with the exception of the Christmas Party.

### **Safety Issues**

During our Club show there will be a number of very visible staff acting as security for own precious exhibition entries and private displays. In addition there will be much material for sale and obviously much cash moving around.

If all club members are alert for suspicious behaviour then the chances of any loss by theft are greatly minimised.

14, 15 AND 16<sup>TH</sup> November, 08

Please mention any concerns to our security staff.

Colin Hazell

~



## Christmas Party

The Christmas party will be held on Saturday 13<sup>th</sup> December 2007 at 12 Noon. The venue for this year's party will be at Jean & Bert Deane's place which is 43 Edwards Road, Wahroonga. Please bring your own table, chairs, drinks and nibbles. The Club will be supplying lunch.

More details in the November edition of Lapis.

~

## Gem & Lapidary Council Snippets

This was a relatively short meeting, with the following points of interest:-

- A new club – the Manning Valley Rockhounds Lapidary Club Incorporated – has been formed and has been approved as a member of the Council.
- A reminder for the promotion to be held at the Cumberland State Forest on 12<sup>th</sup> October. G & L Council members will be there to man a stand measuring 8ft by 8ft, plus power. Club promotional material – and members – are to be there before a 9am start, to enable set-up etc.
- A cabochon judging course to recruit new judges is being organised for the 7<sup>th</sup> and 8<sup>th</sup> March, 2009. Further details are to be advised.
- Many clubs have yet to supply a list of members [names only] and appropriate fees to the G & L Council for Personal Accident Insurance.

~

## NDLC FIELD TRIPS



NUNDLE FIELD TRIP

Bookings have been made for Friday 14<sup>th</sup>; Saturday 15<sup>th</sup> and Sunday 16<sup>th</sup> November, 08.

Please put your name on the list on the Notice Board in the Clubrooms if attending and indicate whether you will be arriving prior to the 14<sup>th</sup> and/or leaving after the 16<sup>th</sup> so I can make confirmed bookings in your name[s].

Please make your own bookings for a cabin or van.

Also please take care on the drive to Nundle as there are three speed cameras en route.

For further information please contact Tony Try on [02] 4393 6168 or Mobile: 0417 676 435 and see the complete Tariff Sheet for the Fossickers' Tourist Park [Ph. 02 6769 3355 or 1 300 366 676] attached to the List on the Notice Board.

Tony Try

~

## Congratulations



Livia Murk turns **90** on 8 October 2008.

Livia, we wish you a wonderful Birthday.



## Chef's Corner

### Banana Loaf

- 3 Ripe Bananas
- $\frac{3}{4}$  cup Sugar
- 2 tablespoons Butter, melted
- 1 Egg
- 1 teaspoon Bi-Carb Soda
- 1  $\frac{1}{2}$  cups of Self-Raising flour

Mash bananas, add sugar, beaten egg and cooled butter, beat well. Add sifted flour and soda. Bake in moderate oven for  $\frac{3}{4}$  hour, in a loaf tin. It sometimes needs an extra five minutes. Serve buttered.

~

# EXHIBITION BULLETIN

*Our show dates are:*

***Friday 24<sup>th</sup>, Saturday 25<sup>th</sup> & Sunday  
26<sup>th</sup> October 2008***

## **Exhibition Competition.**

A special thanks to all of you who have made the effort to submit entries in our Club Competition. It has been a terrific response and it looks like we will exceed the number of entries that we had for our last Exhibition in 2006. They will form the focal point of our display - good luck with the judges!

Judging will take place on Saturday 11<sup>th</sup> October 2008. We need volunteers to be pencilers for the official judges who are coming to the Clubrooms. No previous experience is required and it is a great way to learn some of the finer points that Judges look for – it can really help you to improve your techniques. Lunch is provided. Please contact Brian Burns if you are willing to help.

## **Exhibition Display Cases.**

Thanks for all those who have requested a wooden Club display case (or who can provide their own) to exhibit their lapidary items as part of the Exhibition. If you have forgotten, it is not too late to let me know (Brian 9878 4073) if you still want one.

## **RAFFLE TICKETS**

Please remember to return your raffle tickets books ***SOLD OR PARTLY SOLD*** to the Club Rooms as soon as possible, as it makes it so much easier for the ticket butts to be folded in time and the money accounted for. If you really can't make it to the Club Rooms then bring them along and hand them in at the special table at the exhibition.

1 <sup>st</sup> Prize	15ct Amethyst set in Silver
2 <sup>nd</sup> Prize	Zircon Pendant & Earrings in Silver
3 <sup>rd</sup> Prize	Fine Silver Pendant
4 <sup>th</sup> Prize	Desk Clock
5 <sup>th</sup> Prize	Crystal Vase

These prizes will be on display in the Foyer Showcase, between now and the Exhibition.

## **HELP STILL NEEDED:**

We still need lots of volunteers to help man the various stalls and help in the top Kitchen.

Also we need people to demonstrate the various crafts that are carried out at the Club.

Please put your name on the yellow sheet that is in the Cutting room (or contact Barbara on 4393 6168)

**MEMBERS** are urged to **WEAR THEIR BLUE CLUB SHIRT** when attending the Exhibition. It looks great and can help visitors who want to ask questions about the Club's activities. All Members, including stall holders, are asked to pay the normal admission fee – but only pay it once no matter how many times they actually attend the exhibition over the three days. (New shirts are available in the Shop for \$38 each – excellent quality and all sizes.)

The **OFFICIAL OPENING** will be at 7.30pm on Friday evening 24<sup>th</sup> October 2008. The Mayor of Hornsby Shire Council has been asked to open our Exhibition. It would be nice to have as many members present as possible.

## **SOMETIMES PLASTIC BAGS ARE GOOD ??**

For all those involved on various Exhibition stalls: A lot of things that we will be selling at the Exhibition (eg plants, slabs, books minerals etc) are bulky and so people generally appreciate or need something to carry their goodies away. Plastic shopping bags are still the most convenient way to meet this need. So the least we can do is to save up all the plastic bags from our weekly shopping excursions between now and the Exhibition and give them one more go around from our stalls.



Barbara Try  
Exhibition Coordinator

~

## FAREWELL TO A GRAND OLD LADY

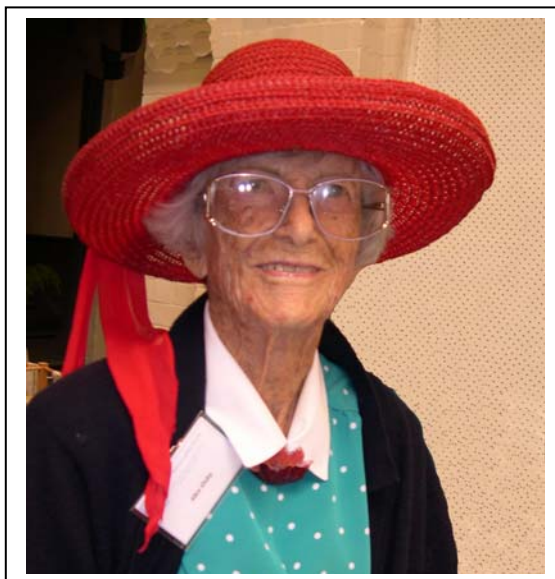
Alice Oxley and I started at our club on the same night in September 1967. We had heard that Claire Schofield was to give a series of lectures on geology. From this beginning interest a whole new vista opened for the pair of us.

Alice had a lively enquiring mind and from this small beginning she, like so many of us discovered the wonderful world of lapidary. In those days we had a newly opened cutting room under the shopping centre at Carlingford Court. Alice starting cutting stones with tutor Ken Bennett but soon found her deep interests in jewellery making and enamelling. We quite often attended classes outside the club given by professional jewellers and spent a couple of weekends up at Blaxland attending workshops run by an enameller up there. She made many sets of teaspoons for her various relatives. Her lead blocks for shaping the spoons are still in our jewellery cupboard. Her stems were usually twisted square wire and at the top she fashioned beautiful little flowers.

In an article in the Good Weekend written when Alice turned 100 years we are told of her early life at West Pennant Hills. She gave up nursing to care for her sick mother and when her mother passed away she cared for her father and finally for her sister Edie until Edie's death a few years ago.

She sold her family home at Thompson's Corner and she and Edie moved into a unit in a retirement village on Boundary Road West Pennant Hills where they lived for many years. Alice was over 100 when she transferred to the nursing home where she passed away last month.

Up to the time she moved into the nursing home she managed by herself



despite failing eyesight and hearing. She found going blind very frustrating because even after she could no longer drive she continued her enamelling with her kiln in the kitchen and maintained a little jewellery workbench.

We used to have quite a few bus field trips. I remember Alice, always with Edie, coming to Lightning Ridge and to Glen Innes where we slept in horse stables.

She was always fun on these trips with her sometimes wicked sense of humour. Despite the fact that most of her life was behind her when she joined the club she was up for anything.

The last time she attended the club was at our Exhibition of 2004.

Not a lot of our present members will remember Alice, but those who do will miss her.

Jean Macleay

~

## CASTING WEEKEND 20-21 September

Ten members prepared items for casting in this weekend workshop. We had one failure. John Corby had travelled down from his new home at Bonny Hills for the weekend and one of his two pots blew through. A good deal of work goes into preparing the models for casting and a failure at the end of the process is very disappointing.

Bill King on his usual marine theme carved an anchor, Brian Burns had laboured long over a carved ring for Barbara to carry the ruby he has cut. John Anderson cast a large fly he had trapped for his frog (carved from stone) for dinner. Rebecca Tin was very creative with her pieces. Barbara Try, Sharon Waters, Richard Adler, Jim Patterson and myself were working on Xmas presents.

Sharon and Richard virtually ran the Sunday part of the workshop so that there are more people now able to take on these workshops.

Bert Deane as usual, gave up his Sunday afternoon to wield the oxy torch aided by John.

Jean Macleay

*The following photos are by courtesy of Bill King.*



Bert Deane & John Andersen



The Casting Group

~

## Fulgurite – the results of lightning

We know lightning to be the electrical charge occurring in stormy weather. Most of us have seen it, and it can be very intimidating, especially when associated with crackling thunder and pouring rain.

Aside from the storm at hand, when conditions are right, something extraordinary may also occur as a result of the lightning. In a twinkling of an eye, fulgurites can be created by the effect of lightning sticking silica sand ( $\text{SiO}_2$ ), fusing it into a tube-like shape.

The name fulgurite, pronounced ful'-gur-rite, is from the Latin: fulgur (lightning), Fulgurites are natural hollow carrot-shaped glass tubes formed in sandy soil by lightning strikes. They are up to a couple centimeters in diameter and can be metres long if they are carefully excavated so as not to break the fragile structure. The interior is normally very smooth or is lined with fine

bubbles; the exterior is generally coated with rough sand particles. They are root like in appearance and often show branching or small holes.

About 100 lightning discharges occur every second on Earth, on average. Only about one third of them involve ground strikes, which have potential to make fulgurites. The earliest discovery of fulgurite was reportedly made in 1706 by Pastor David Hermann in Germany. All fulgurites can be divided into two classes;

- Sand fulgurites and
- Rock fulgurites

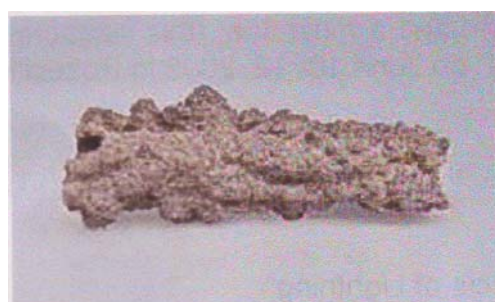
**Sand fulgurites** are usually hollow, glass-like tubes with sand adhering to the outside.

**Rock fulgurites** are formed when lightning strikes the bare surface of rocks. It gives the appearance of a thin, glassy substance encrusted on the rock. Glass of this type displays a wide range of colours, depending on the composition of the host rock.

The diameter of most fulgurites ranges from a quarter of an inch to 3 inches, and anything larger is very unusual.

Fulgurite's glassy colour ranges from pale grey to smoky grey, to shiny black, depending upon the type of sand from which they are formed. Since fulgurites are real glass, weathering has little effect on them and they can be well preserved over a long period of time.

Fulgurites could be described as nature's own works of art. (Mother Nature's Casting) This amazing art form occurs all over the world, but most often on the sandy beaches of Florida where after thunderstorms beachcombers hunt for the fulgurite.





Courtesy of Paul Di Paolo and the Montreal Gem & Mineral Club



## Funnies

### The History of Aprons

**For the younger generation it was Grandma's apron .... for us older folks, it was Mum's apron....**

I don't think our kids know what an apron is.

The principal use of Grandma's apron was to protect the dress underneath, but along with that it served as a potholder for removing hot pans from the oven.

It was wonderful for drying children's tears, and on occasion was even used for cleaning out dirty ears.

From the chicken coop, the apron was used for carrying eggs, fussy chicks, and sometimes half hatched eggs to be finished in the warming oven.

When company came, those aprons were ideal hiding places for shy kids, and when the weather was cold, grandma wrapped it around her arms.

Those big old aprons wiped many a perspiring brow, bent over the hot wood stove. Chips and kindling wood were brought into the kitchen in that apron.

From the garden, it carried all sorts of vegetables. After the peas had been shelled, it carried out the hulls.

In the autumn, the apron was used to bring in apples that had fallen from the trees.

When unexpected company drove up the road it

was surprising how much furniture that old apron could dust in a matter of seconds.

When dinner was ready, Grandma walked out on the porch, waved her apron, and the men knew it was time to come in from the fields to dinner.

It will be a long time before someone invents something that will replace that 'old-time apron' that served so many purposes.

### AND REMEMBER:

Grandma used to set her hot baked apple pies on the window sill to cool. Her grand-daughters set theirs on the window sill to thaw.

They would go crazy now trying to figure out how many germs were on that apron. I don't think I ever caught anything from an Apron!!

•••••

***Don't laugh.....it is all true...***

### ***Perks of reaching 50 or being over 60 and heading towards 70!***

- **Kidnappers are not very interested in you.**
- **In a hostage situation you are likely to be released first.**
- **No one expects you to run--anywhere.**
- **People call at 9 pm and ask, did I wake you?**
- **People no longer view you as a hypochondriac.**
- **There is nothing left to learn the hard way.**
- **Things you buy now won't wear out.**
- **You can eat supper at 4 pm.**
- **You can live without sex but not your glasses.**
- **You get into heated arguments about pension plans.**

More next edition

•••••

~



## DATES OF INTEREST

- Oct 11** NORTHERN DISTRICTS LAPIDARY CLUB  
Judging Day
- Oct 11** Campbelltown Club, - Open Day & Sausage Sizzle – Clubrooms  
Bensley Rd, Macquarie Fields
- Oct 14** NORTHERN DISTRICTS LAPIDARY CLUB  
General Meeting Tuesday 8 pm at the Clubrooms Beecroft all members welcome
- Oct 18-19** Central Coast Lapidary Club - Gem Beading & Mineral Festival & Annual Competition  
At Wyong Memorial Hall, open Saturday 9am to 5pm & Sunday 9am to 3pm
- Oct 24-26** NORTHERN DISTRICTS LAPIDARY CLUB  
**Biennial Exhibition – Theme “Rock & Roll”**
- Nov 1** Cessnock Gem & Minerals Club is holding their Annual Rock Auction (see notice board) At the Cessnock Scout Hall, Cnr of Maitland Rd & Henderson Ave Cessnock  
BBQ to Start at 11.00am Viewing 12.00 Noon, Auction commences at 1.00pm
- Nov 7-9** Parramatta Holroyd Club – Annual Exhibition  
Clubrooms – 73 Fullagar Road, Wentworthville
- Dec 13** NORTHERN DISTRICTS LAPIDARY CLUB  
Christmas Party

**2009 – GEMBOREE – Vic, Horsham – April 10-13**

**2010 – GEMBOREE – Tasmania – Devonport – April 2-5**

**2011 – GEMBOREE – NSW – Bathurst - April 22-25**

For information on Interstate and Overseas Gem Shows see back pages of the Gem & Lapidary News available in clubrooms on shelf near library.



### Northern Districts Lapidary Club Shirts

Good quality polo shirts are available from the shop for field trips and future GEMBOREE'S.

They are royal blue with the Club's badge embroidered above the pocket on the left hand side of the shirt.  
Cost is \$38.00. Sizes range from small to XXXL.

If your size is not available in the shop please complete the form below.

Please indicate the size and number you require.

Name:.....

Size:..... Number:.....

Return to Secretary NDLC – PO Box 59, Beecroft NSW 2119

**Lapis now available by  or  !!**

Members, if you would prefer to receive your LAPIS by email rather than by snail mail please send you email address to Barbara Try. My email is [twotrys@bigpond.net.au](mailto:twotrys@bigpond.net.au)