



LAPIS

www.ndlapidary.org.au

"SHARE YOUR KNOWLEDGE"

VOLUME FORTY THREE NUMBER EIGHT MAY 2008

CLUB NEWS

The next General meeting will be on Tuesday Evening 13 May 2008 at 8.00pm in the Clubrooms at Becroft - all members welcome.

Following the General meeting we will have Tony Cunneen a popular local author and educator who will talk on the history of Becroft, Cheltenham, Hornsby and World War 1. So members please come along and join us for this interesting talk.

New Members

We would like to welcome our newest member –

- Jaclyn Ewen – Middle Dural

We wish Jaclyn many long hours of enjoyment cutting gemstones and enjoying the other aspects of our Club.

PRESIDENT'S REPORT

Our Exhibition theme is "Rock & Roll" and it is only 6 months away - so it is time for everyone to seriously get involved in helping to make it a success. There are many avenues for you to get involved, such as

- Volunteers to manage and help with the various stalls and related activities over the three days of the Exhibition;
- People to help with the design and layout of the hall;
- ALL CLASSES are expected to assist by giving some time to cut some cabs (specified sizes, material supplied by Club), setting stones in silver findings (also provided), or in other ways yet to be decided;

- Help at various Working Bees to be held over the coming months (see below for first one);
- Of course, EVERY MEMBER who is actively involved in lapidary should be preparing some entries for our Club Competition which forms an integral part of our Exhibition display.

Remember, a successful Exhibition helps to keep your Class fees as low as possible.

Brian Burns

From the Committee

Safety Issues

Vision is the most essential tool of all in of the gem / rock / jewellery / mineralogy field.

It is the sight of a glittering crystal, the shape and texture of one of the many oddities of mineral form, the amazing varieties of pattern and colour of natural and cut stones, or the wonderful historical record and patterning of fossils that lead us to an interest in lapidary and collecting.

To enhance our knowledge, reading is pretty much an essential.

To cut and evaluate stone or fashion jewellery, or to collect in the wild or in a retail outlet, vision is an essential.

It is of course an essential to our quality of life, defining many characteristics of our interactions with the world.

Thus our need to care for our vision.

There are many potential hazards to vision in lapidary and related fields that require precaution. As a prompt for your consideration of caution, a list (not comprehensive) of risks to vision follows:-

When collecting, chips and shards of stone and metal flying off rock or tools.

Environmental hazards like sticks or grasses causing penetration injuries.

Infection of the eyes by insect, water or soil borne organisms.

Dust contamination of eyes, windblown or from mining processes.

When cutting, shards and chips thrown off by machinery.

Contamination of the eye by cutting or polishing compounds and grits.

Contamination of the eye by glues, chemicals of mineral identification, lubricants and cleaning compounds

In making jewellery, penetration injuries by sharp tools and metal shards.

Eye contamination by metal filings.

Heat and/or chemical burns from hot metals, fluxes and pickle solutions.

Eye strain from insufficient magnification or light.

Temporary to permanent damage from too much light, or the wrong kind of light such as ultraviolet or laser.

Changes to vision can often indicate a change in our health status.

Causes may be age related, blood pressure, diabetes, neoplasms (tumours or cancers), infections, allergies, effects of medications and side effects, strokes, glaucoma, nerve or vascular problems within the eye, or the effect of intoxicating substances.

If you have a concern, see a professional for diagnosis and treatment, because early intervention may save both your vision and your (quality of) life.

SEE you around, Colin Hazell

~

Use and Maintenance of the NOVA Wheels:

1. Nova wheels **MUST** be used with a water lubricant. This fact cannot be stressed too strongly, for if the wheels are run dry for more than a few moments, rapid wear and damage can result. Make certain that the geyser is supplying sufficient water to the Nova Wheel before using it.

2. Spend from two to five minutes on each wheel with the first cab, working it over the entire surface of the wheel. The finer grit wheels, 3000 and up, will take longer to remove the excess resin, and will continue to improve in speed and finish as more stones are worked.

3. Use sufficient pressure to cause the surface of the wheel to depress slightly to conform to your stone. This eliminates the flat spots left by the grinding wheels and will cause fewer scratches than would be produced by pressure that is too light.

4. It is important to hold your stone so that you do not allow the upper or leading edge to act as a plow and dislodge diamonds from the surface of the wheel. The diamonds in Nova Wheels are firmly embedded in the resin and with proper use cannot be dislodged to cause contamination when proceeding from one wheel to the next. But they can be dislodged with the sharp edge of a stone.

5. To prolong the life of your Nova Wheels, be certain to prepare your stone properly on the sanding disc. Use the sanding disc to sand your stone to its final size and shape, and to remove all sharp edges and corners. This leaves only the final sanding and polishing to the Nova Wheels. Similarly, it is important to do a good job of sanding at each stage before going to the next as the finer grit wheels will take much longer to remove scratches than do the coarser wheels

6. If your stone still has scratches after the final polish, check the following procedures:

- Make certain all deep scratches left by the coarse (100 grit) grinding wheel are removed by the fine (200 grit) grinding wheel.
- Make certain you are using enough pressure on the Nova Wheels. Too light a pressure can cause scratches.
- Almost all problems with scratches are caused by improper procedure in the above areas.

Bert Deane – Cutting Room Supervisor

~

Library

Many thanks for the donated books from Margaret Torpy and Jim Patterson.

REMINDER: Book Return

There are a number of overdue library books on loan. If you have been borrowing books from the Library, the Librarian will be very obliged if you would look around your coffee table and elsewhere in case there is an overdue library book that has escaped your attention. If so, a prompt return of the book(s) will be most appreciated. (For recent borrowers within the last month this reminder is for information only).

Frances Sun, Librarian

~

Our latest addition to the Library is

“GEM CUTTING”

By John Broadfoot & Peter Collins

The supplementary title to John Broadfoot's book is 'A beginner's guide to faceting'. It definitely is that, but, there is no doubt that experienced facetors can also learn a great deal from this comprehensive book

Each chapter leads you through the basics of faceting and highlights the most important principles.

It looks at a brief history of faceting, how to set up a faceting workshop, types of laps, preforming and dopping and how to cut your first stone. It flows from the simplest to the more complex cuts chapter-by-chapter and step by step.

There are chapters to extend the more experienced facetors with an introduction to cutting difficult soft gemstones, basic gemmology and machine maintenance. The role of computers in faceting is introduced. The photos and diagrams are clear and understandable.

The Club now has two copies of this book in the library. One for reference only and one copy for loan to Members.

jw

For the Experienced Facetors!

We are looking for four or five experienced facetors who would be willing to test their skill in cutting a full size replica of some of the famous diamonds of the world, eg the Cullinan, Hope, Dresden, Koh-i-Noor, etc. The Club is willing to

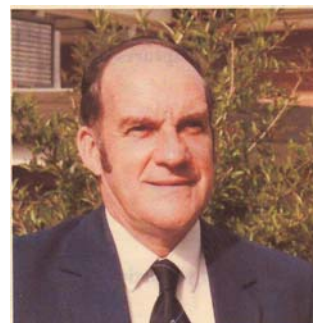
purchase the appropriate sized rough (generally CZ) and the finished stones would remain the property of the Club and would go on display at our Exhibition. Cutting very large stones is more difficult than the usual smaller variety – but if you feel up to the challenge then please contact Brian Burns (9878 4073) as soon as possible.

Reminder for Teachers' Meeting

All Club teachers, including those involved in weekend workshops, are reminded that there will be a special meeting/get-together on **Saturday 17 May at 6.30pm in the Clubrooms.** This is an opportunity to discuss any issues about classes etc and to exchange ideas on how to make the Club function better in this regard. If you have any pet topics that you would like to include on the Agenda then please phone Jerry (9889 5889) or Brian (987 4073). Pizzas or other appropriate food will be provided (call Brian if you have any particular food preferences/dislikes).

~

Vale Ken Whitton 1927 -- 2008



Like many of our Members, Ken's introduction to lapidary was in the Evening College system at North Ryde. In 1981 Ken, together with his wife Lorna joined our Club. They both started in the Monday night classes with Ken doing cabochons and Lorna busy with silver jewellery. Years later, when Ken won a Club cabochon competition he paid tribute to the guidance of his instructor, the late May Wybrow.

He did some carving but his main interest and activity was faceting. Ken was very active in the Sydney branch of the Australian Faceters Guild and was a member of the competition committees for both National and International faceting competitions.

In their retirement Ken and Lorna travelled widely both overseas and at home. They were keen

caravaners and wandered all around and about our wonderful country.

They loved going to GEMBOREES and were regular attendees for many years. Despite Ken's illness they had still booked a site at the recent Murray Bridge GEMBOREE. Sadly, Ken was not well enough to attend.

Ken was a gentle quiet person who will be sadly missed by all his friends both at our Club and in the Lapidary movement.

jw

~

Carving

I was approached by our President, Mr Brian Burns to combine with Mr James (Jim) Patterson and make up a showcase of finished pieces which show our carving skills. This showcase is situated in the foyer of our Club Rooms. I started doing this type of work in 1986 and have had a lot of pleasure in doing so, especially creating different shapes.

In 1988 Joy Sippel, who has since sadly passed away, took out 1st prize for mushrooms made from petrified wood, being one of my own creations. The type of materials used are soft stone, which include marble, jet, peat moss from Russia, zebra stone and malachite. The hard stone being agate, ribbon stone and chinchilla wood. In my display you will see from the above how different shapes come about. I hope this may benefit anyone interested in learning this skill. I can be reached on 9484 0356 and I am only too happy to show my skill with any interested members.

Bill Ashman

~

EXHIBITION BULLETIN

I would like to remind all members that it is now the time to start preparing **PLANTS** for sale – we need to strike and repot them so that they will be ready for sale in October. We also need **BOOKS** to sell, so start looking around at home for books that can be sold at the Exhibition. Storage for these books is available at the Club

Working Bee

When: Sunday 25 May 2008
Time: Starting at 1:00 pm

We need Silver Jewellery people to assist with cleaning findings and setting stones.

We also need assistance with sorting and cutting faceting rough ready for sale, and others to help with stock-taking of our existing sale items.

We will be looking for people to **demonstrate** our various skills during the exhibition so if you would like to help in that regard please contact me or Brian Burns, and we will put your name on the list.

Amendment to the Competition Schedule 2008

The minimum dimension for the All Cabochon Cuts unless otherwise specified is 15mm NOT 18mm as listed.

Also note section O-3.3 Opal Solid has a minimum size of 10mm.

Barbara Try
Exhibition Coordinator

~

THE MIGHTY MURRAY [BRIDGE] MOB GEMBOREE 2008

The "Mob" Gathers.

Tuesday 11th March at 8pm was a General Meeting at the Beecroft Club rooms. Barbara and I decided to leave for Murray Bridge that same night, after the meeting. This meant parking the caravan in the main street of Beecroft, which caused quite a number of curious glances. We finally left Beecroft at 10pm and had a beautiful run down the M2/M7 to Pheasant's Nest, arriving at 11pm, where we spent the night among a mass of trucks; campers and cars – all doing the same thing.

The next morning we got away early and again had a dream run to Goulburn, where we spent some time with Sue and Joe O'Neil from the Goulburn Gem Society, before making our way to Wagga Wagga. By this time it was very hot and dry. Tom and Lyn Bridson were already ensconced in chairs in the shade, while Jade [their dog] was enjoying the benefits of air-conditioning in their caravan.

John and Gina Weatherburn were the next to arrive. As it was getting late we were then starting to worry about George Hunter's whereabouts, however, he finally arrived at 5.30pm. It would appear that after a leisurely breakfast and a talk with the neighbours that it was just on 10am [*time for a cuppa !!*] so he had to have morning tea before he left. Bruce and Jean Macleay arrived a little later, after lunching with friends in the Southern Highlands, on the way.

While Summer was officially over, it was not going away without a final burst of heat and our little fan worked overtime all night.

We all left Wagga and headed for Jerilderie, where we had morning tea in the shade of large trees in the park. It was while under one of these trees enjoying a cup of coffee that I was "pooped" on by a Galah perched high above me. Fortunately it just missed my coffee cup and landed on my hand. We moved on to Deniliquin where we had another break and some lunch. It was again very hot and dry with the countryside showing brown/red dirt in the bottom of many of the dams, until we got into the irrigated areas. It was however a pretty drive with very little traffic until we had to pass a bicycle rider on a narrow piece of road, and then there were – *naturally* – heaps of vehicles coming the opposite way. [*That Murphy person seems to be everywhere !!*]

It was about this time that I realized that I had failed to pack any shorts for the trip. [*After all, Summer was over and we were heading South*] So, while taking a break at Elmore, with the help of Barbara, Gina and Jean I was marched into a "clothing recycling" shop and purchased a pair of dark blue jeans for the grand sum of \$2.50. Later, at the caravan park in Bendigo, Gina loaned Barbara some very sharp scissors, and while I stood high on the step of the van she cut them down into shorts. Given that this took place after Happy Hour the process was fraught with great danger to my person, and the end result was artistic rather than neat. It was only during this process that I realized that I had been well "ripped off". A large tear, where the back pocket should be, means that it would be prudent for me to also wear dark blue underwear !! Needless to say they proved to be much cooler – for a number of reasons – than my full length jeans.

Because of the very hot weather we decided to make an early start from Bendigo, while it was relatively cool. However, the 12V plug on our car fridge decided to malfunction, and it would not work. We found an auto-electrician who obtained the relevant plug for us, and we eventually left Bendigo at 11.30am. During the course of having the repairs carried out the auto-electrician mentioned the current drought in the area and the fact that NSW was "stealing" Victoria's water, which prompted a quick and "suitable" response. However, I am wondering whether his feelings were reflected in his charge for his work on our vehicle, which was considerably higher than I expected.

Refrigerators seemed to giving others problems as well: George's van fridge was struggling to cope with the hot weather; the Weatherburn's van fridge was inadvertently turned Off overnight resulting in some food spoilage and the Macleay's van fridge required the administration of some super-glue.

Skenes Creek was our next stop and it was a pretty drive as we took minor roads and bi-passed major towns. It was while en-route to Skenes Creek that Bert and Jean Deane joined our party. This was fortunate for George, as a combination of rough roads and a very strong wind had worked his outside van door open, and Bert noticed that it was flapping in the breeze and "waving" to oncoming traffic as he bounced along. While the day had been very hot, the caravan park at Skenes Creek was right on the beach and we slept with a cool sea breeze and the sound of a surf that seemed, during the night, as if it would break right over the caravans,

After a cool night, the next morning was a complete change, and cold. We all donned jumpers and warm clothing as we headed to Apollo Bay and the Markets: The Otway Fly Treetop Walk [*which had been closed the previous day because of threats from bush fires*] and the Twelve Apostles. The wind was strong and the seas were rough, so a heavy sea mist covered everything making it virtually impossible to take nice photographs. We continued on to Peterborough, where we set up camp and ultimately had Happy Hour behind the vans and out of the wind. We then drove back to Port Campbell and bought fish and chips at the Mobil

Service Station, where we sat outside and watched the passing parade of people.

Sunday 16th was a non travel, leisure day. It was also completely different to the previous day and perfect weather for photographs as we all made our own way to the various tourist spots and then spent a quiet, restful afternoon. Ted and Helga Clark arrived later in the afternoon and set up camp with the rest of us. Later again, a very pleasant Happy Hour and BBQ tea was held in the camp kitchen.

The next morning saw us making our way through an extensive pine forest plantation and past a large wind farm as we made our way to Port Fairy – a very pretty town – where we took a break and had morning tea on the bank of the river. We then moved on to Portland where we had another break and lunch adjacent to the Port facilities before going on to Mt Gambia. By this time the hot weather had returned and reached 40 degrees C with a very strong headwind, which took its toll on all concerned. Here we treated ourselves to powered sites – each of which had its own ensuite facilities – which was very nice indeed.

The next day we were again looking for jumpers and warm clothing as temperatures plunged to the low 20s. For most, this was a day of sightseeing, washing and shopping. For Barbara it was a trip to the dentist for the removal of an abscessed tooth followed by an afternoon of rest and an evening meal of “baby food”.

It was here that Ted and Helga realized that they would not be able to eat all the ice-cream they had stored in the caravan park refrigerator before moving on, so offered it to be shared. Later that evening I was looking for George to offer him a “cuppa” to finish off his evening meal, but could not find him anywhere.. He was ultimately located sitting [*hiding ?*] in the corner of the Deane’s caravan with a desert plate piled high with ice-cream, which has now earned him the nickname of “Puddin” It would appear that our George is as partial to a Pudding after a meal as he is to a “cuppa”.

Tony Try
Field Trips Officer.

To be continued next edition.



Funnies

Male or Female ????

You might not have known this, but a lot of non-living objects are actually either male or female?

Here are some more examples: (continued from last edition)

WEB PAGES: Female, because they’re constantly being looked at and frequently getting hit on.



TRAINS: Definitely male, because they always use the same old lines for picking up people.



EGGTIMERS: Egg timers are female because, over time, all the weight shifts to the bottom.



HAMMERS: Male, because in the last 5000 years, they’ve hardly changed at all, and are occasionally handy to have around.



THE REMOTE CONTROL: Female. Ha! You probably thought it would be male, but consider this: It easily gives a man pleasure, he’d be lost without it, and while he doesn’t always know which buttons to push, he keeps trying.



.....

Three elderly ladies were discussing the trials of getting older.

One said, “Sometime I catch myself with a jar of mayonnaise in my hand in front of the refrigerator and can’t remember whether I need to put it away, or start making a sandwich.”

The second lady chimed in, “Yes, sometimes I find myself on the landing of the stairs and can’t remember whether I was on my way up or on my way down.”

The third one responded, “Well, I’m glad I don’t have that problem; knock on wood,” she raps her knuckles on the table, then says, “That must be the door, I’ll get it.”

.....

DATES OF INTEREST

- May 13** NORTHERN DISTRICTS LAPIDARY CLUB
General Meeting Tuesday 8 pm, Clubrooms Beecroft all members welcome
- May 17 & 18** NORTHERN DISTRICTS LAPIDARY CLUB
Casting Weekend
- May 17** Central Coast Lapidary Club – Annual Rock Auction & Garage Sale
Club Rooms at Lot 7 Ourimba Creek Road, Ourimba
- May 17 & 18** Lismore Club – 18th Annual Gemfest
Lismore Showground – Janet McNamara (02) 6628 1060
- May 25** NORTHERN DISTRICTS LAPIDARY CLUB
Working Bee starting at 1:00pm
- 31st May –
1st June** Canberra Lapidary Club – Winter Gem & Mineral Show
Exhibition Park in Canberra (EFIC), Federal H'way Canberra ACT
- 6-9 June** Festival of Treasures
Gosford Showgrounds, Showground Road Gosford (Main Pavilion)
- 14-15 June** Hawkesbury Valley Gem Show
Civic Centre George Street Windsor
- 2009 – GEMBOREE – Vic, Horsham – April 10-13**
2010 – GEMBOREE – Tasmania - Devonport
2011 – GEMBOREE – NSW - Bathurst

For information on Interstate and Overseas Gem Shows see back pages of the Gem & Lapidary News available in clubrooms on shelf near library.



Northern Districts Lapidary Club Shirts

Good quality polo shirts are available from the shop for field trips and future GEMBOREE'S.

They are royal blue with the Club's badge embroidered above the pocket on the left hand side of the shirt.
Cost is \$35.00. Sizes range from small to XXXL.

If your size is not available in the shop please complete the form below.

Please indicate the size and number you require. Name:.....

Size:.....Number:.....

Return to Secretary NDLC – PO Box 59, Beecroft NSW 2119

Lapis now available by  or  !!

Members, if you would prefer to receive your LAPIS by email rather than by snail mail please send you email address to Barbara Try. My email is twotrys@bigpond.net.au